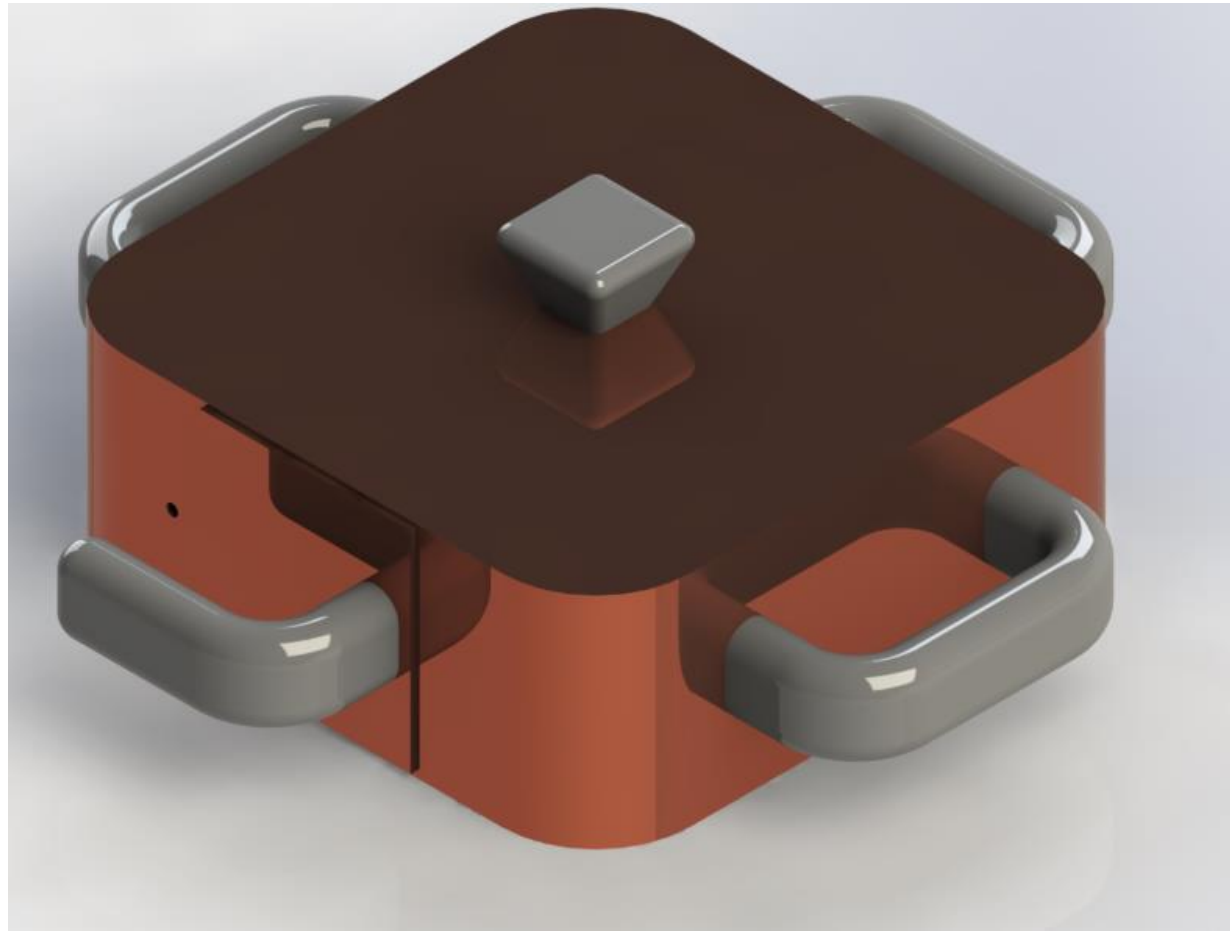
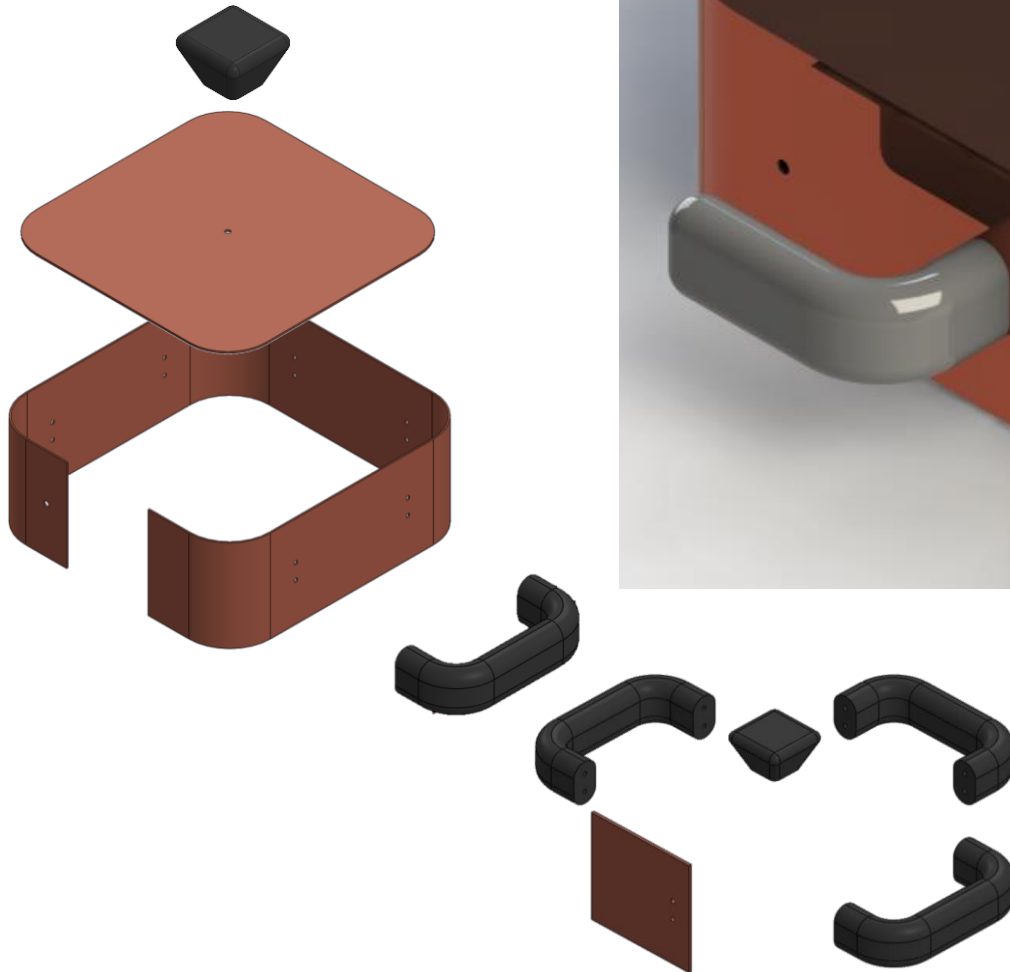




# Design and Technology



GCSE final products

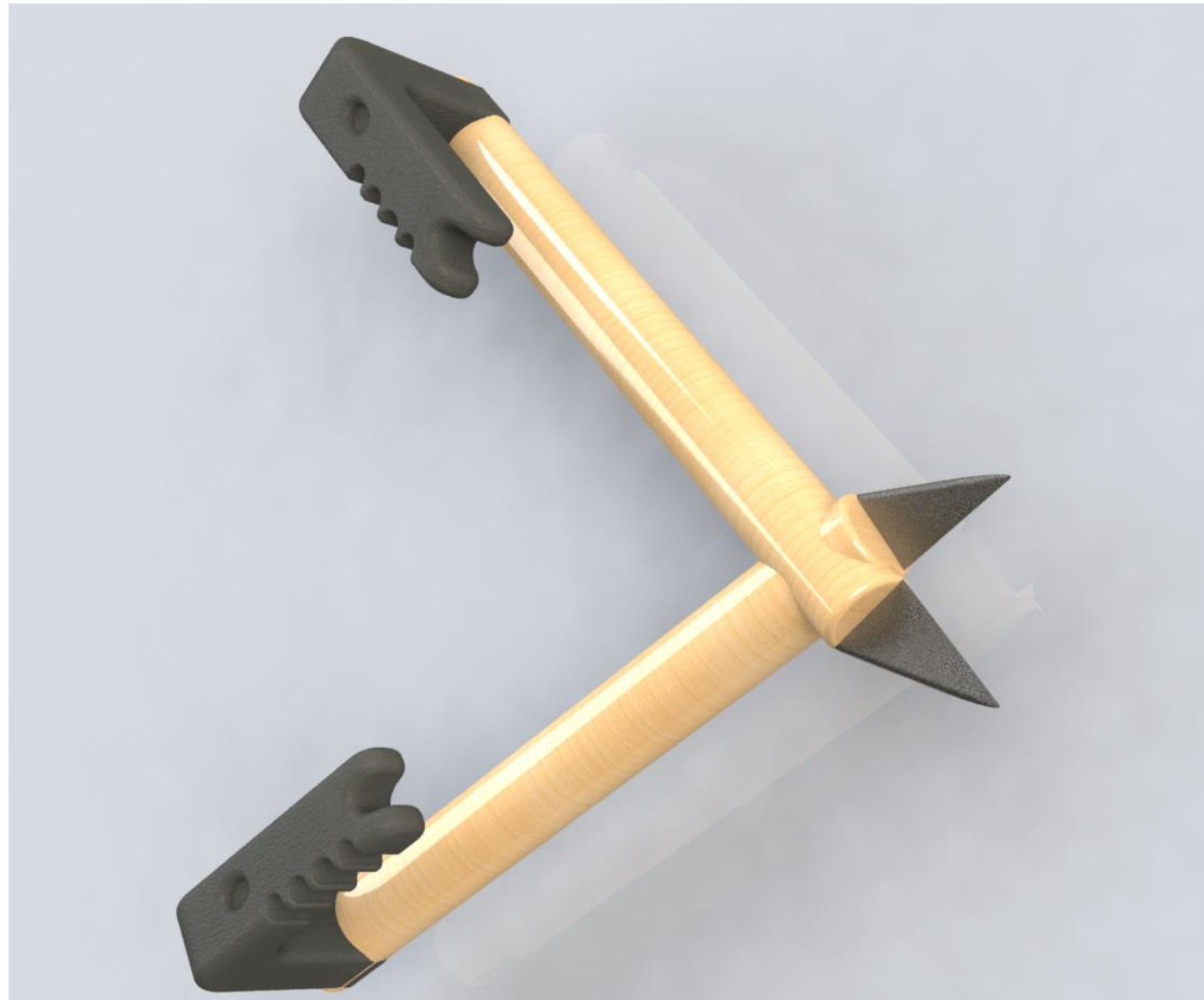


Year 7 Pewter Project



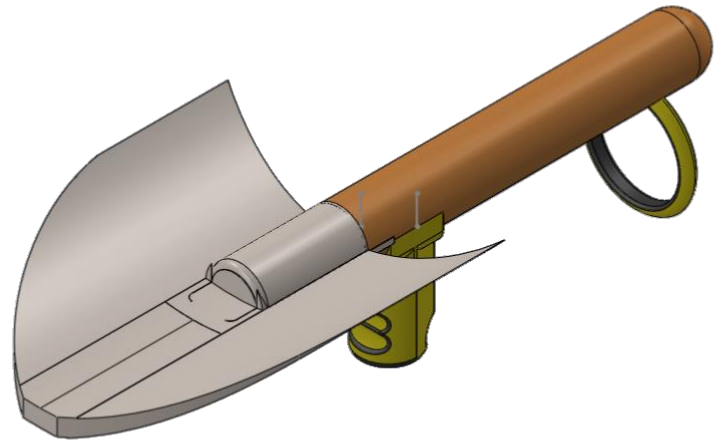
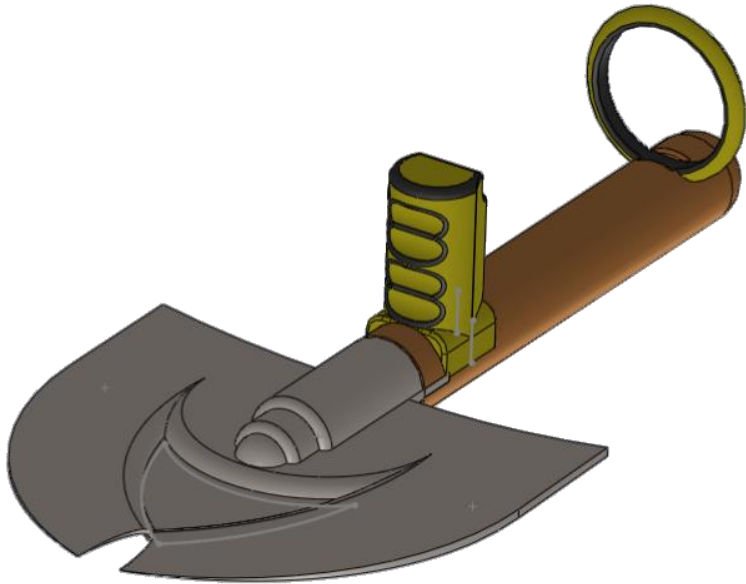
Year 7 Pewter Project













## Year 10 Garden Tool Project

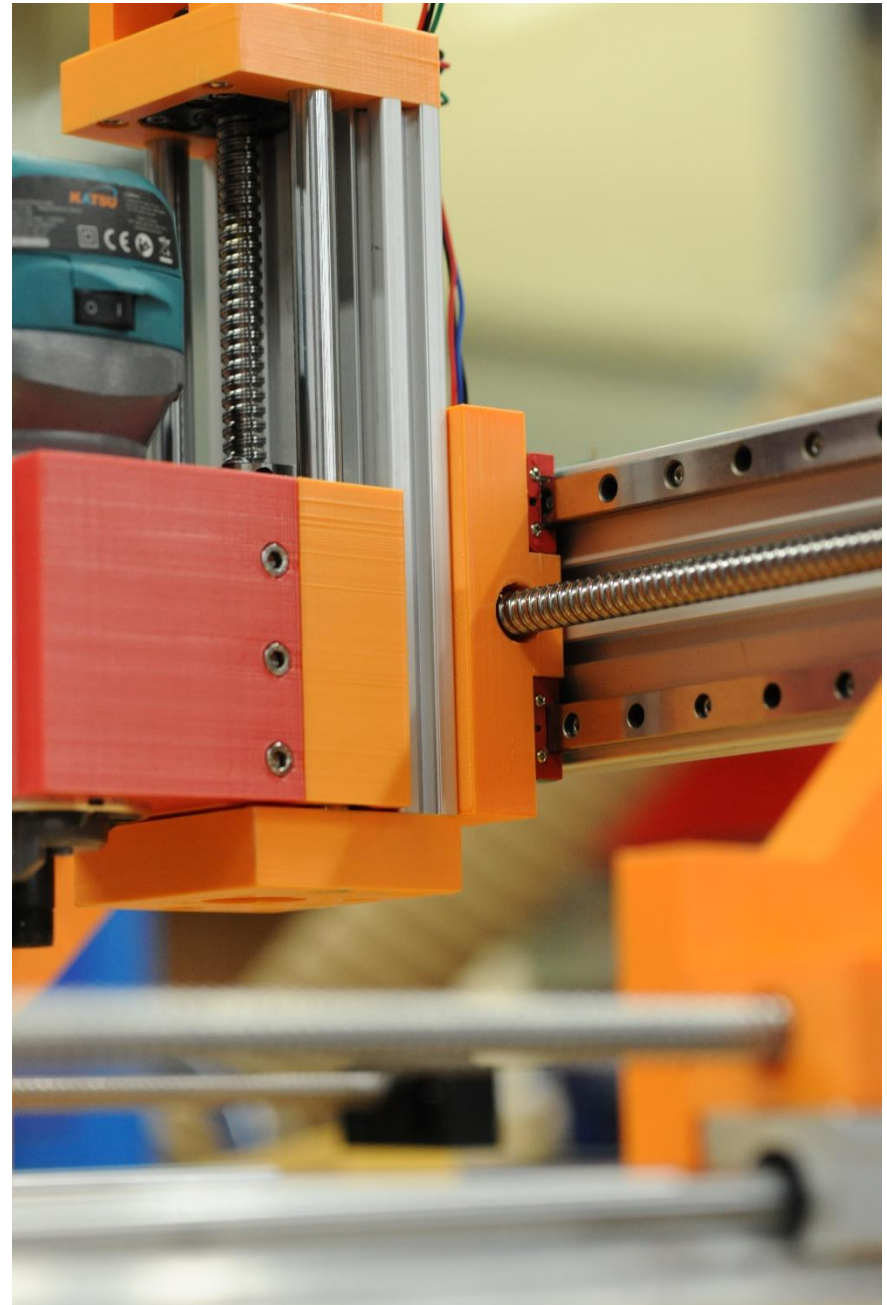






# Design and Technology

Mr Matera's CNC machine









GCSE final products





## GCSE final products













# Design and Technology



Year 9 Lamp project



# Design and Technology



Year 9 Lamp project



# Design and Technology



Year 9 Lamp project







# Design and Technology



Year 9 Lamp project





# FINE ART

## Bugsy Malone set

















# FINE ART

Year 7 POP ART project









# FINE ART

Year 7 POP ART project















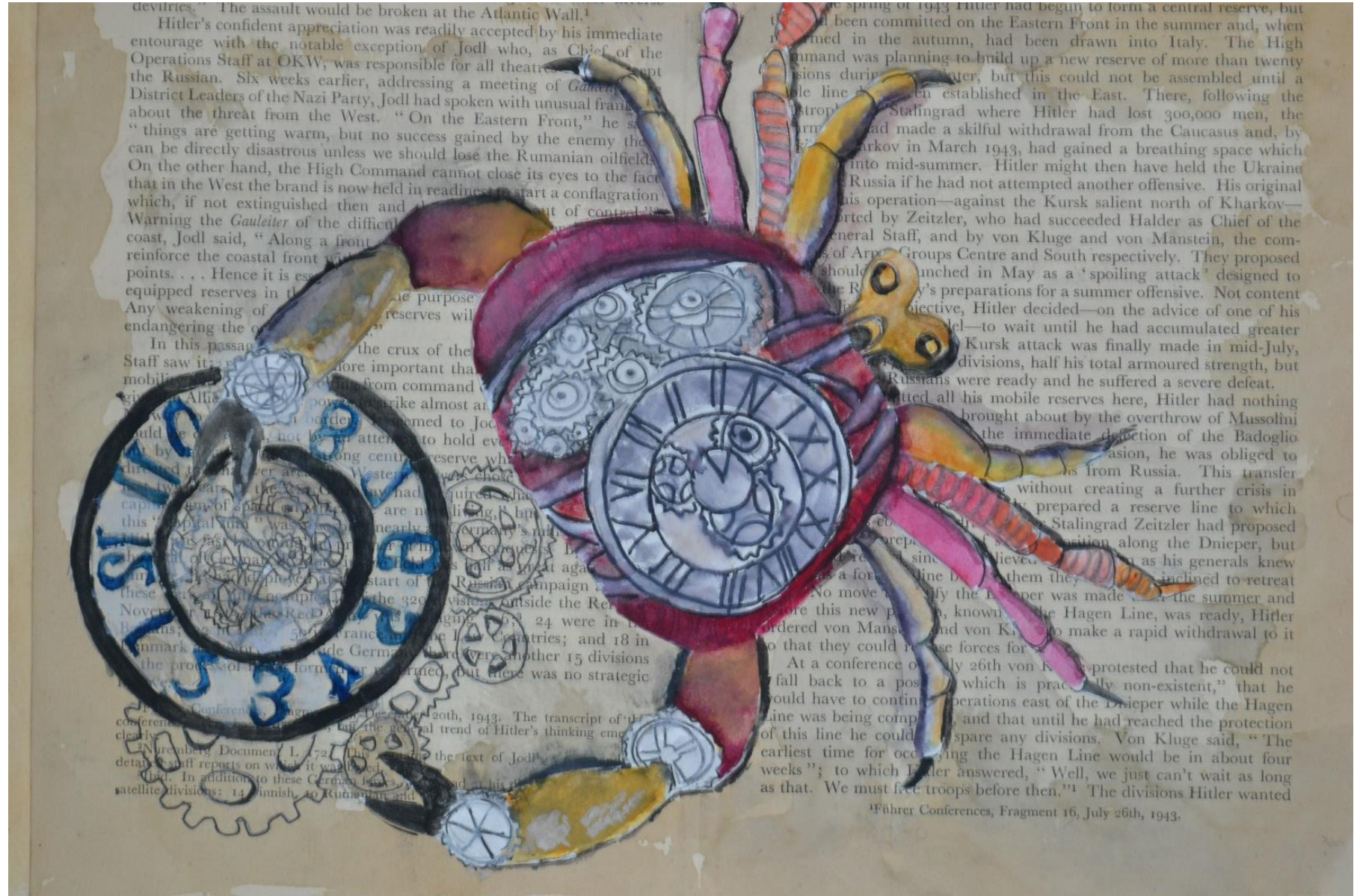




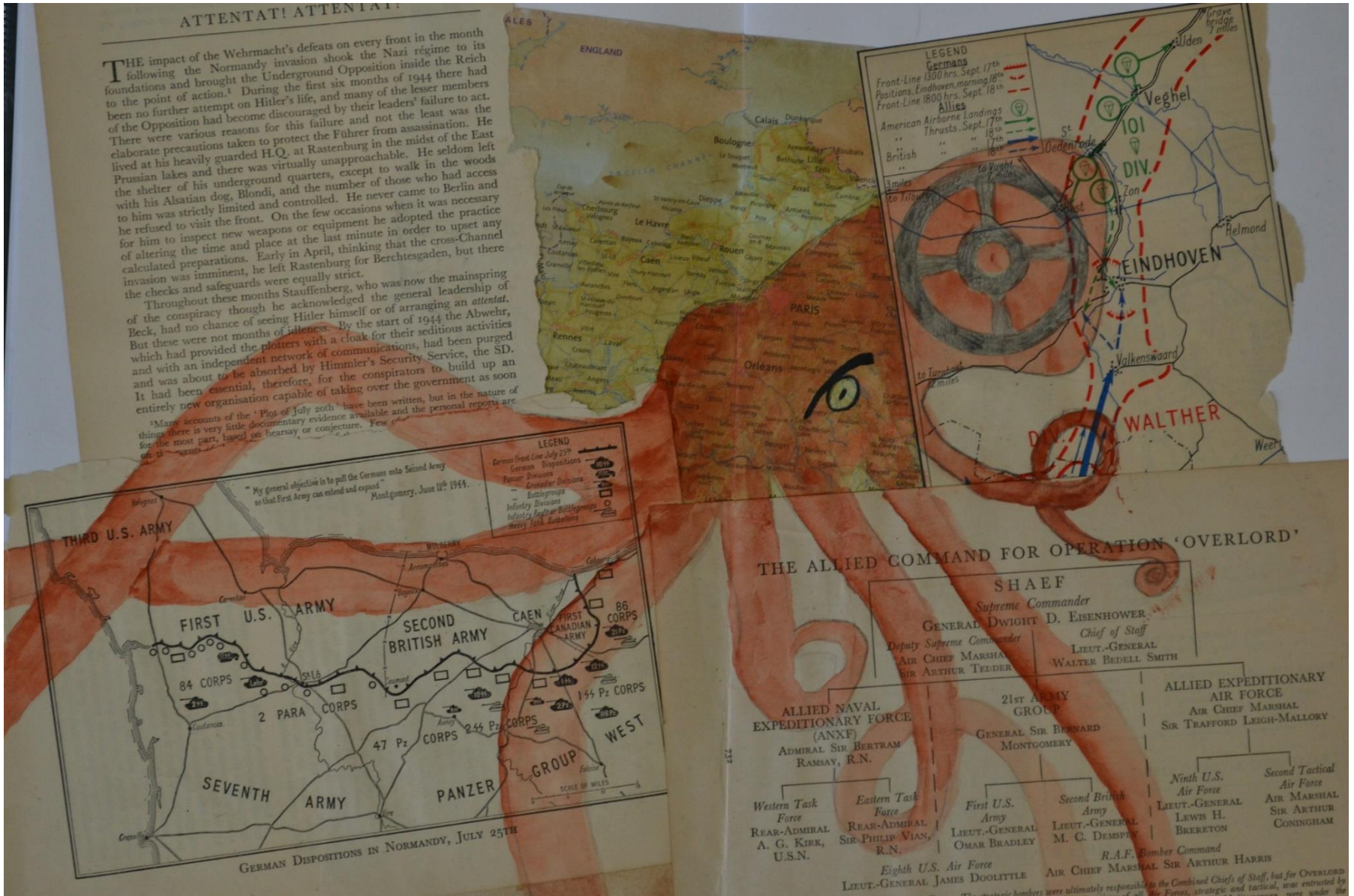


















# FINE ART



Year 8 Pieces

# FINE ART

Year 8 Pieces







# FINE ART

Year 8 Steam Punk





# FINE ART



Year 8 Steam Punk

## Year 8 Steam Punk











# FINE ART

# Year 10 Coursework





## Joël Penkman analysis



Ice Creams 1 (2015). Egg tempera on gesso board.

Joël Penkman is a New Zealand-British artist who mainly worked with egg tempera media to create semi-photorealistic, contemporary still-life drawings. He used to be a graphic designer for 7 years until he began to paint in the UK, an example of his artwork is "Ice Creams 1" (2015). This artwork consists of two detailed ice creams which suggest a link to the theme of ordinary from the contrast between ordinary and extraordinary, this is shown as their painting is of still-life and common every day objects.

The image consists of a simple painting of two ice creams on a plain white background. It is a semi-abstract painting that explores ideas about ordinary objects, in which the artist is trying to express a message that he wants to make people smile by painting normal yet unexpected objects (e.g. the food). The artwork is semi-abstract because it makes the subject seem standard yet unique at the same time through its partial unrealism.

In this artwork, there are a lot of random shapes and different forms, whereas he has drawn and painted separate and small details. The surfaces look smooth and brush marks are merged, which make the visual texture look varied. The background consists of neutral colours of white and light grey, whereas the subject consists of colours such as tertiary and secondary colours. There is tone to present a sense of realism and shape in shading.

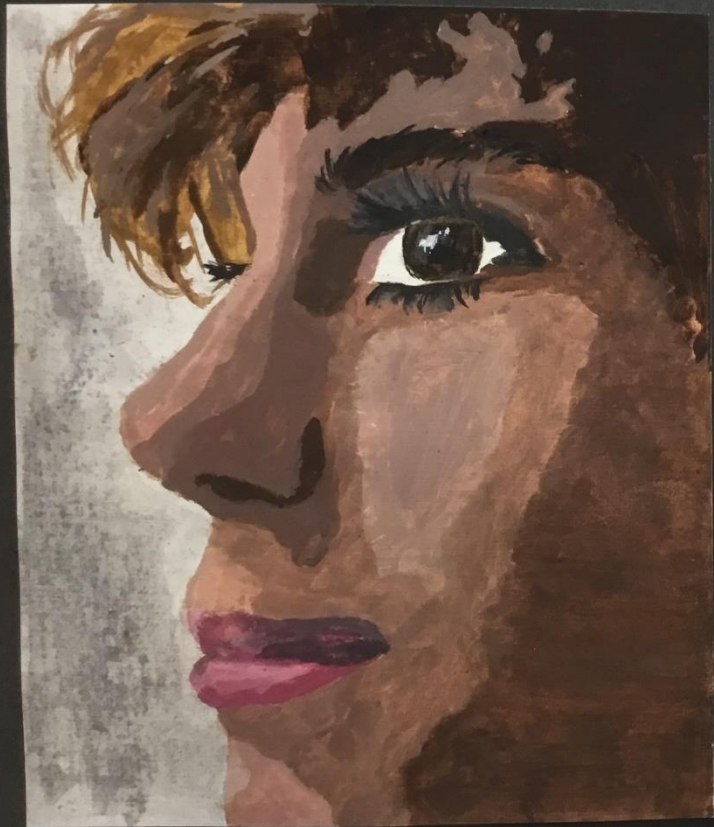
The artwork was created using egg tempera media, this is made from ground up powder paint and egg yolk mixed with water. The material and how the image is made is important to the understanding of the work because it is the most extraordinary aspect of theme between ordinary vs. extraordinary. Since viewers would not expect a normal subject to be made of something



how the background was plain and the wrappers reflected the light and shadows. I successfully illustrated a great contrast between the colours and shades of each wrapper. However, I could present the materials in a more translucent way.

# FINE ART

## OIL PAINT TRIAL



I did an oil paint trial based on one of my fragmented images that I used on my artist # 4 response. I pastored the image so that the details in tone were reduced, which creates patches of different shades of skin, hair and lips.

I experimented with the different colours I could make, and I found that it was challenging to recreate the skin colours accurately because the oil paint pigments were so strong that they heavily affected the colours. I successfully painted the portrait in proportion to the real image, however creating the shape of the patches of colour was difficult because the detail was so precise whereas the paint brushes weren't as fine. I may work with oil painting again in the future to experiment with the different ways I could present distorted portraiture, such as with photography and photoshop, acrylic, watercolour or pastels.



# FINE ART

## colour trials:

For my coloured ink, I have directly worked from my photograph, which merged the image of the Kaaba and a watch. The reason was to create a link between the ideas of time and religious traditions. In Islam, Hajj is a pillar and a compulsory thing to do at least once in your life if you have the wealth to do so. Time in Islam is extremely important - it should be spent wisely. Throughout a day, there are 5 obligatory prayers which require part of your time. Moreover, one may also spend time with religion and may miss the other activities. I used fountain pens and water colours to create this on my piece. I thought about the relationship between the process of Hajj and the process of time. The Hajj is a journey that takes a long time and is a very important part of a Muslim's life.

The Kaaba is a very important place in Islam and is the most sacred site. It is a cube-shaped building with a black stone on the outside and a gold interior. The Kaaba is a symbol of the unity of Islam and is a place where Muslims go to pray and to perform the Hajj. The watch is a symbol of time and is a reminder that time is precious and should be used wisely. The combination of the Kaaba and the watch in the photograph is a powerful image that represents the relationship between time and religion.





# FINE ART

## بِن قُلَانْدَر BIN QULANDER

This is a painting of Arabic words. The word at the centre of the painting is "Falah", meaning success from self-improvement. By this, I think that Qulander may be trying to share the importance of this word and express a message of good qualities, so to me it changes the way I look at the painting and I view it more as a reminder to aspire to be good. I like the way that Qulander paints the letters in such artistic ways to create an aesthetically pleasing as well as a meaningful artwork for viewers.

The medium is acrylic on canvas, 60x60. The central colour here is rich and regal purple, which is a colour related to royalty and was used to make expensive and valuable fabrics for monarchs. The background purple is quite cool-toned and the darkest/most saturated, which may contrast the central more. Instead of brush marks, I do see some paint pools in the background and in the centre. I think that the composition of the work is quite important here, the word in the middle is quite important and is the main attraction of the piece, as it also contains the meaning of the work.

This is part of a series of Islamic Artworks that Qulander has made also. All of these pieces are similar in style and have cultural patterns. Qulander uses parallel calligraphy pens for the linear strokes of the letters. This is important as it refers to how Arabic letters are written; they are written using parallel tips and inks.

For me, the feeling I get from this artwork is inspiration. The focus point on the word "Falah" was perhaps aiming to try and inspire others to act good for the better. Moreover, the beautiful patterns and strokes of the letters give a feeling of creativity. Qulander turned these letters into an extraordinary piece. Overall, the artwork makes me feel at ease and reflect on culture. Islam is a religion of peace, guidance and ease; portraying it as a positive thing is vital to help others also understand and connect with the religion.



Bin Qulander is from Pakistan and was born on 7<sup>th</sup> March 1980. His artwork consists of Islamic Calligraphy, which is a vital aspect of the religion, in cultural patterns and letters.

Qulander's artworks may link the theme of Extraordinary as he uses the Arabic alphabet and Islamic terms to create such mesmerising pieces. His artworks also link to my subtheme of culture as they are inspired by the religion of Islam and its teachings, phrases and lettering.



transcription of "Falah" by Bin Qulander.

# FINE ART



## Colour Trial

Separating the mask from the actual face was quite powerful as it linked more strongly to my ideas of layering and hiding your reality. To explore further, I would like to experiment further on the idea of the power of layering into a face.

For my colour trial I based my inspiration on my photoshop experiments - using the 'posterize' filter. The layering of the colours links to my previous ideas about layering different things on a face such as 'butterfly' and stitching.

I used acrylics and found out how using white highlights changes the painting, making less dull and flat and bringing out a more robotic and surreal mood. The contrast in colours from the hand to the mask creates a clear difference between the human and man-made object.

The colours are also quite similar to the beetle shells as there is layering and a shine/reflection to the object.



FINE ART

Stella Thomas-Epstein



# FINE ART

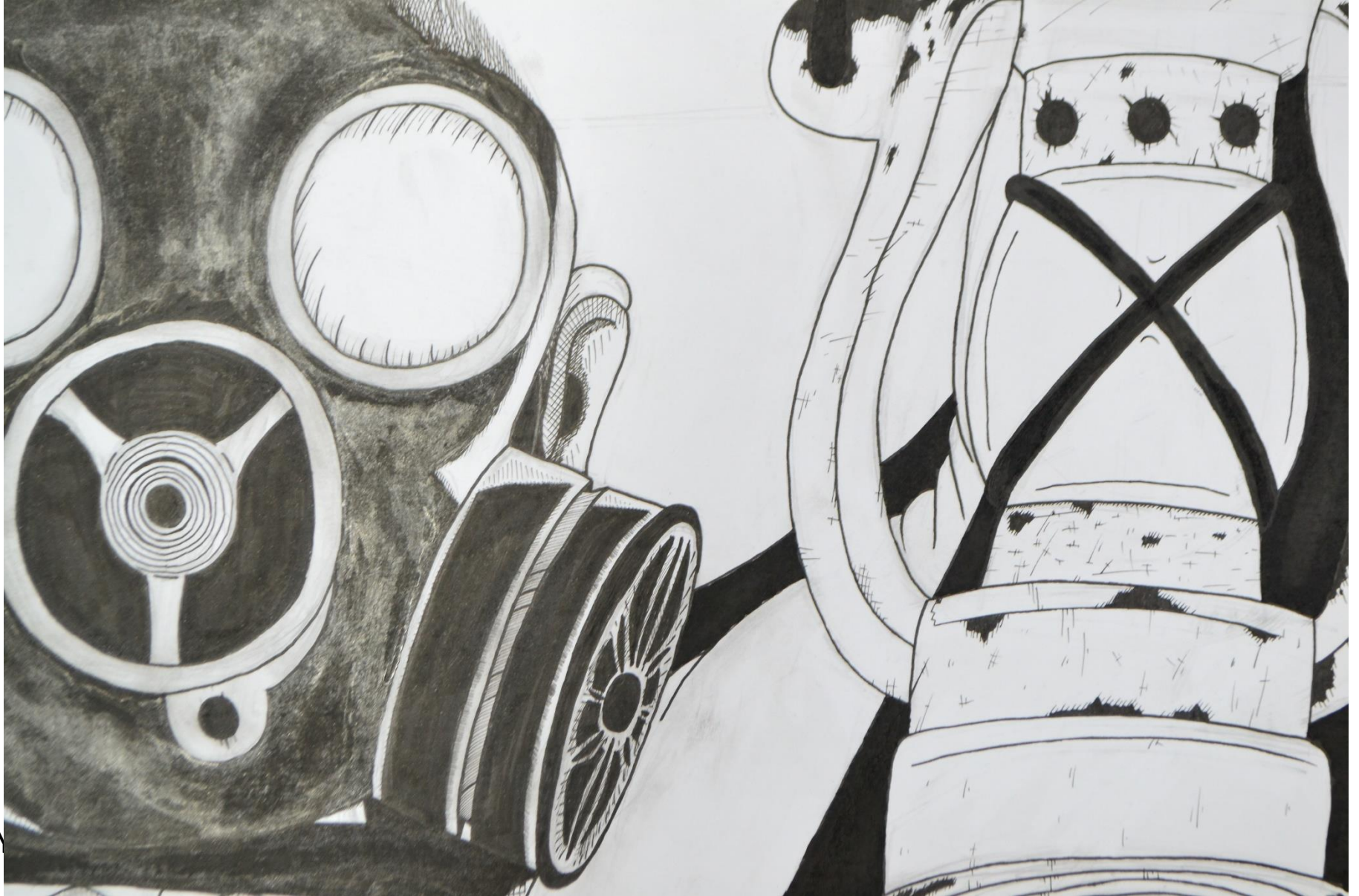
Kelechukwu Chukwuemeke





FINE ART

Alan Studniak



FINE ART

Emmanuel Odumosu





# FINE ART

Benjamin Moxon





# FINE ART

Year 12 oil paintings

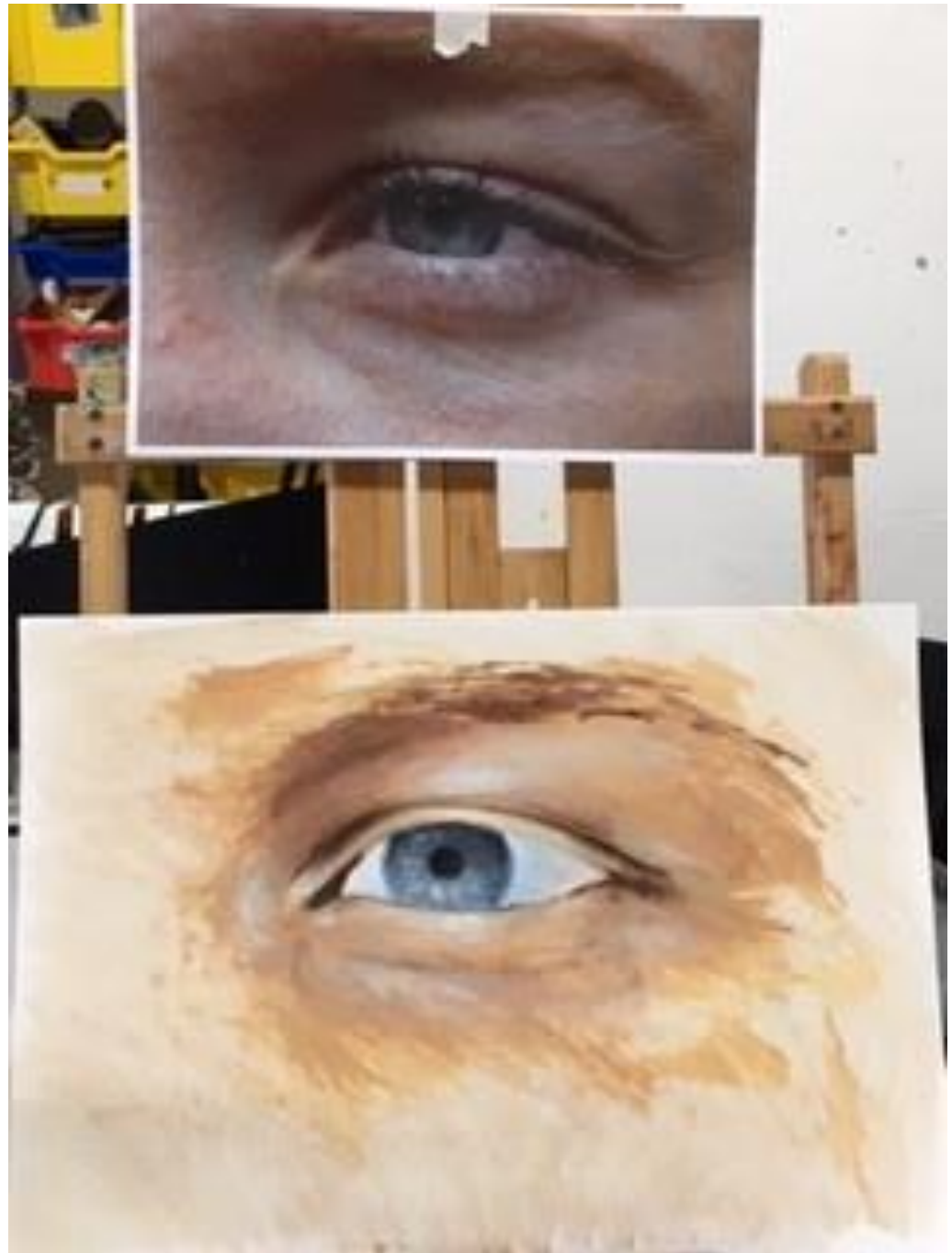


# FINE ART



Year 12 oil paintings

# FINE ART



Year 12 oil paintings



# Textiles

## Year 7 Ear Bud Pouch Project

### Assessment 1 – Presentation and analysis

#### Task:

Create a moodboard by presenting collected imagery along the theme of superheroes, then analyse what you think it is about.

#### You will be assessed on how well you:

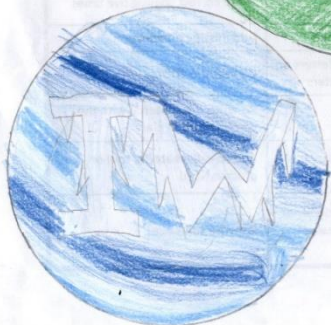
- ☐ Cut out and arrange your imagery in the space
- ☐ Include a range of images
- ☐ Identify what the designer was inspired by and what they are saying through their work

0	0.1	0.2	0.3	0.4	0.5	0.6
0 working towards	1 just	2 mostly	3 fully			
Moodboard has been attempted with the presentation of some images Analysis includes some explanation of parts of the research	Moodboard shows many different types of images with attempt to arrange them attractively Analysis includes an explanation of most parts of the research	Moodboard shows many images which have been cut out and arranged attractively Well-written analysis includes an explanation of all parts of the research, with some understanding of the situation in which they were created	Moodboard is inventive and highly attractive, all parts cut out and arranged accurately Clear understanding of the context with all parts of the research explained sensitively and fluently			



The Hulk

WWW = Your pictures were very nice and detailed. You also have a very detailed analysis.



→ Ice woman (my made-up one)



Woman  
Woman  
Woman  
Woman  
Woman  
Woman

See me for a merit

Villans Villans Villans Villans Villans Villans

Planet  
Planet  
Planet  
Planet  
Planet  
Planet

gascinated  
gascinated  
gascinated  
gascinated  
gascinated  
gascinated

Disney  
Disney  
Disney  
Disney  
Disney  
Disney

#### Analysis:

My work, Ice woman logo was inspired by the beautiful colour blue and the Disney princess Elsa. Elsa from Frozen movie is about a princess with powers to shoot ice/snow/water out of her hands, form ice castles and other ice objects, cause snow storms and other things to do with ice/snow/water. I am gascinated by the idea of her becoming a superhero as her abilities and kindness could save many people and capture many villans. I thought that Elsa's superhero name could be - Ice woman (IW). Her logo which I have drawn in the bottom left corner, says IW (Ice woman). The 'I' and the 'W' have been drawn to look like they have been "Zapped" by Elsa's ice super-abilities. I think I believe this is a good quality of the logo as it tells you who IW is before you know anything about her and I also just think the design looks really nice. Behind the letters is a circle filled with stripes of different shades of blue. The circle is like an earth or another planet to represent global game/love for her, however the planet is coloured in her signature colour blue. I love this design alot and if I were a superhero I would deggignatly have ice powers - And that is the meaning. The Hulk logo - I drew it because the Hulk is my favourite hero and I will have to change the background as I will not be able to sew jets in the way I drew.

It was good green penning but you could have done a bit more.

### Assessment 1 – Presentation and analysis

#### First marking

WWW

Very well drawn logos  
Your pictures were very nice and detailed. You also have a very detailed analysis and interesting analysis.  
EBI: 6 8  
Even better if you had explained what you liked about your other logos.

0.5

After improvements: Explain how you met your targets in green pen.

0.5



# Textiles

## Year 7 Ear Bud Pouch Project

### Assessment 1 – Presentation and analysis

#### Task:

Create a moodboard by presenting collected imagery along the theme of superheroes, then analyse what you think it is about.

#### You will be assessed on how well you:

- ☐ Cut out and arrange your imagery in the space
- ☐ Include a range of images
- ☐ Identify what the designer was inspired by and what they are saying through their work

0	0.1	0.2	0.3	0.4	0.5	0.6
0 working towards	1 just	2 mostly	3 fully			
Moodboard has been attempted with the presentation of some images. Analysis includes some explanation of parts of the research.	Moodboard shows many different types of images with attempt to arrange them attractively. Analysis includes an explanation of most parts of the research.	Moodboard shows many images which have been cut out and arranged attractively. Well-written analysis includes an explanation of all parts of the research, with some understanding of the situation in which they were created.	Moodboard is inventive and highly attractive, all parts cut out and arranged accurately. Clear understanding of the context with all parts of the research explained sensitively and fluently.			



WWW = I Liked how you used specific colours: Green, red, yellow, Etc...  
 Ebi = It would be better if you had not numbered them and maybe did some lopsided.

\* see me for a merit

#### Analysis:

In these superhero symbols I have chosen the most powerful superheroes in my opinion.

1. It's a design of the Supergirl's symbol and you would have this on a bag to make you feel more hard working as super is a positive word. 2. I chose Flash because I think his power is very interesting and it could make you feel to do something quicker. 3. It could make you feel strong and you may know who's symbol this is by the shades of green. 4. I drew Batman's symbol because I just how the colors are great together but are not do not have any similarities between them. 5. I think this means the same as Hulk's symbol but it pushes you to try and fit. 6. I went to my science class and this symbol Radiation damages the living tissue possibly cause DNA damage which is like a similar to a villain if you think about it so I chose this so we could be cautious and careful nearly all the time. 7. I used this because it means meet Aquagirl and I know that Aquagirl is a strong brave girl and tries to save everyone in danger. This would be good for this design because it is simple and has a well meaning to it and the meaning is to help others in need. 8. This design is called Captain America and 12 is Spiderman. They are different because they have different powers but they never get caught knowing who they really are. 9 and 11 is for Iron Man and what will happen if villains decide to invade. 10 is for Green Lantern which is his main tool.

### Assessment 1 – Presentation and analysis

#### First marking

WWW: Excellent analysis and some really carefully drawn logos

EBI: 6/8 It has effected my design because I have thought though what I have done and I chose the ones that are much easier to do but also they look good. I have just thought throw and changed a few ways to do it.

0.5

After improvements: Explain how you met your targets in green pen.

Good improvements to explanation

0.6

you have done even better than before but you need to explain 3 properly

# Textiles





# Textiles



# Textiles





# Textiles





# Textiles





# Textiles

## Wadding.



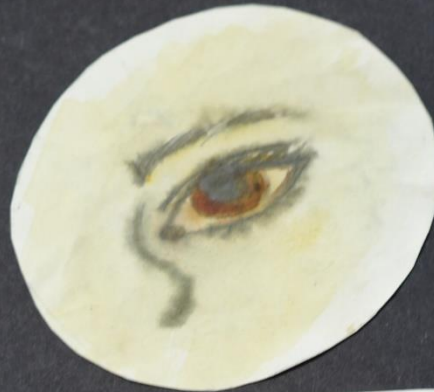
↑  
1st attempt



↑  
2nd attempt

is doing trials for my final outcome which consists of these padded circles  
er a whole area the top that I am going to make. I used wadding inbetween  
cutted out of my ployester that had my photoshop that I sublimation  
I then used the zizag stitch to stitch the two cut pieces of fabric. I had  
which I didn't know in the beginning as so my first attempt was not the  
lose to the edge therefore I don't think it looks bad. My second attempt  
ed much smaller circles for this attempt and it made me think if I  
of circles for my outcome.

## Experimenting with transfer paint.



I started doing more trials and in these trials, I was working with transfer paint. Firstly I drew a rough sketch of an eye on paper and later selected different coloured paints and started painting in the first sample above I use black embroidery thread to stitch on parts of eye but this wasn't my intention as when I heat pressed the piece of paper that I painted, some colours faded or changed colour in particular the black transfer paint which I used to outline the eye, to draw the pupil etc had faded. To be honest I don't like the overall effect of this eye and I don't think I will be using this in my final outcome. Therefore below this I tested out many colours that I would





# Textiles





# Textiles





# Textiles



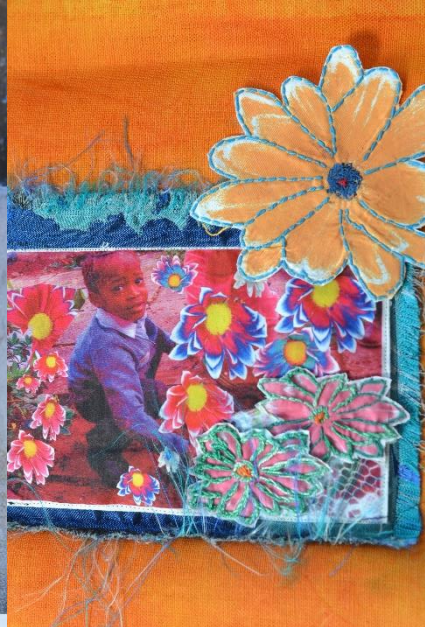
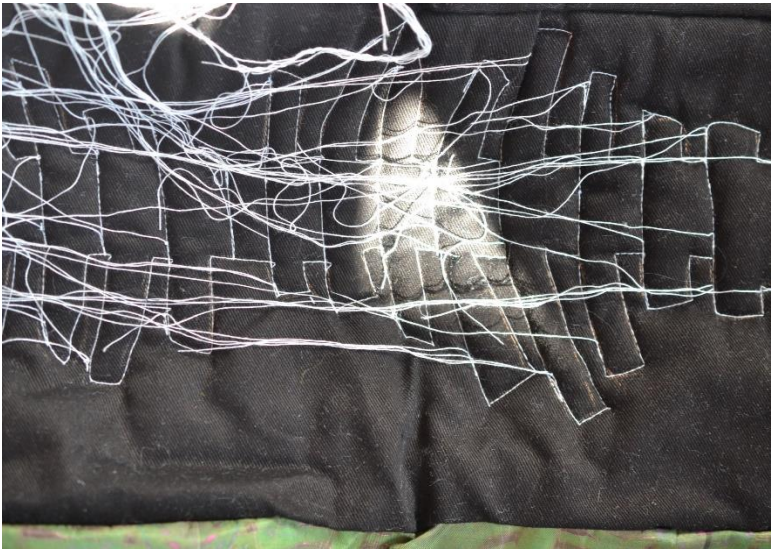


# Textiles



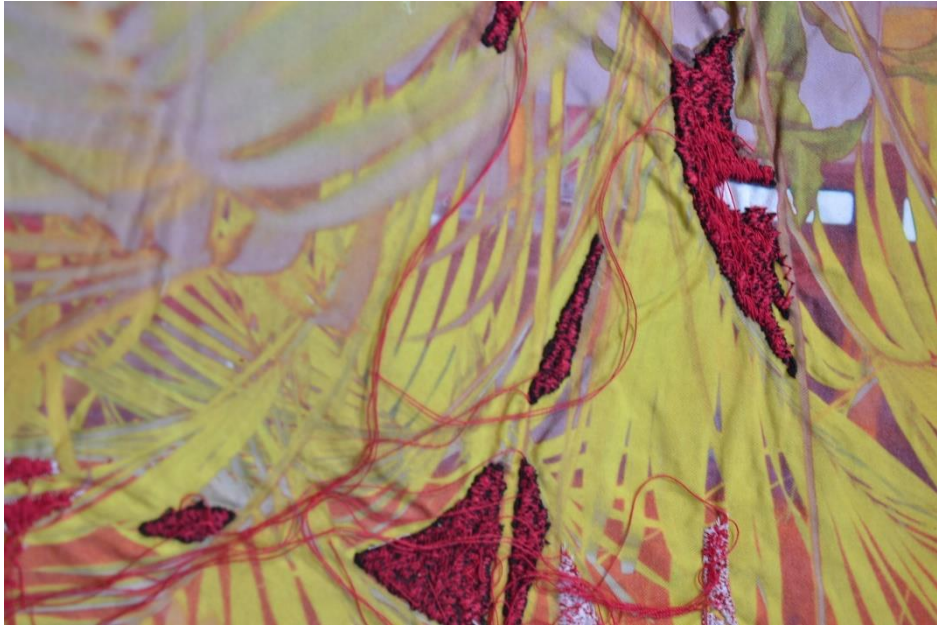


# Textiles



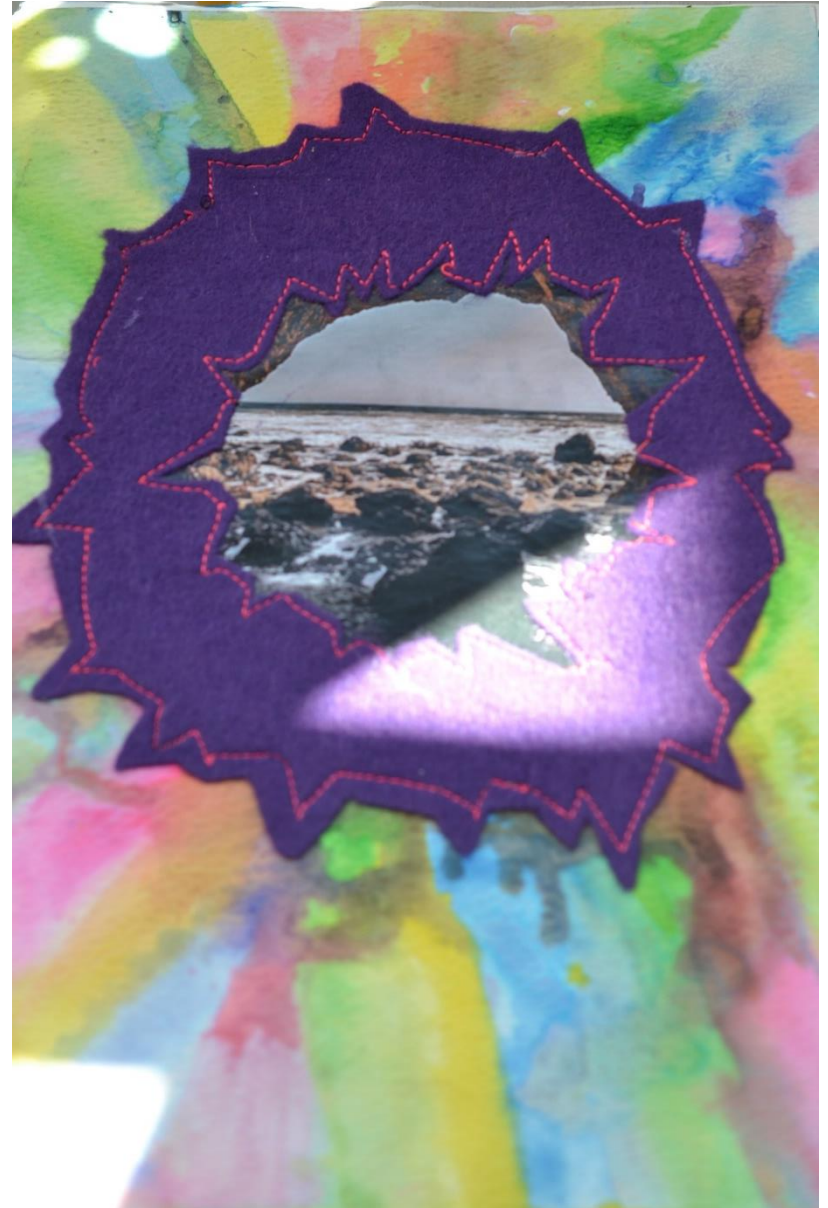


# Textiles





# Textiles



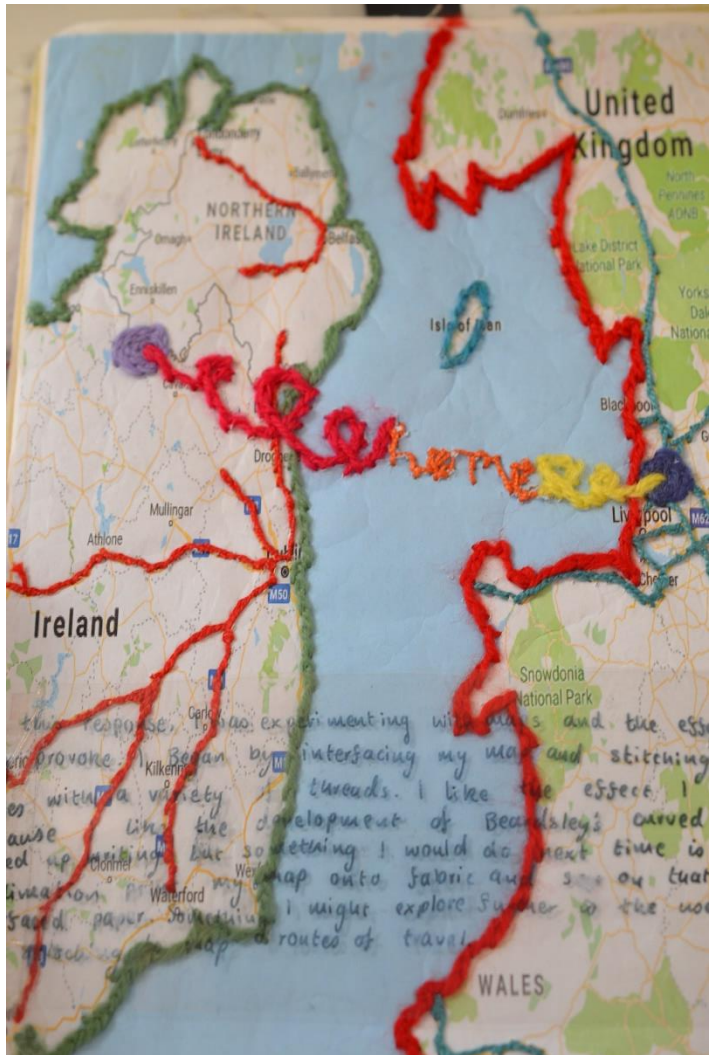


# Textiles





# Textiles





# Textiles







GCSE Final Practical













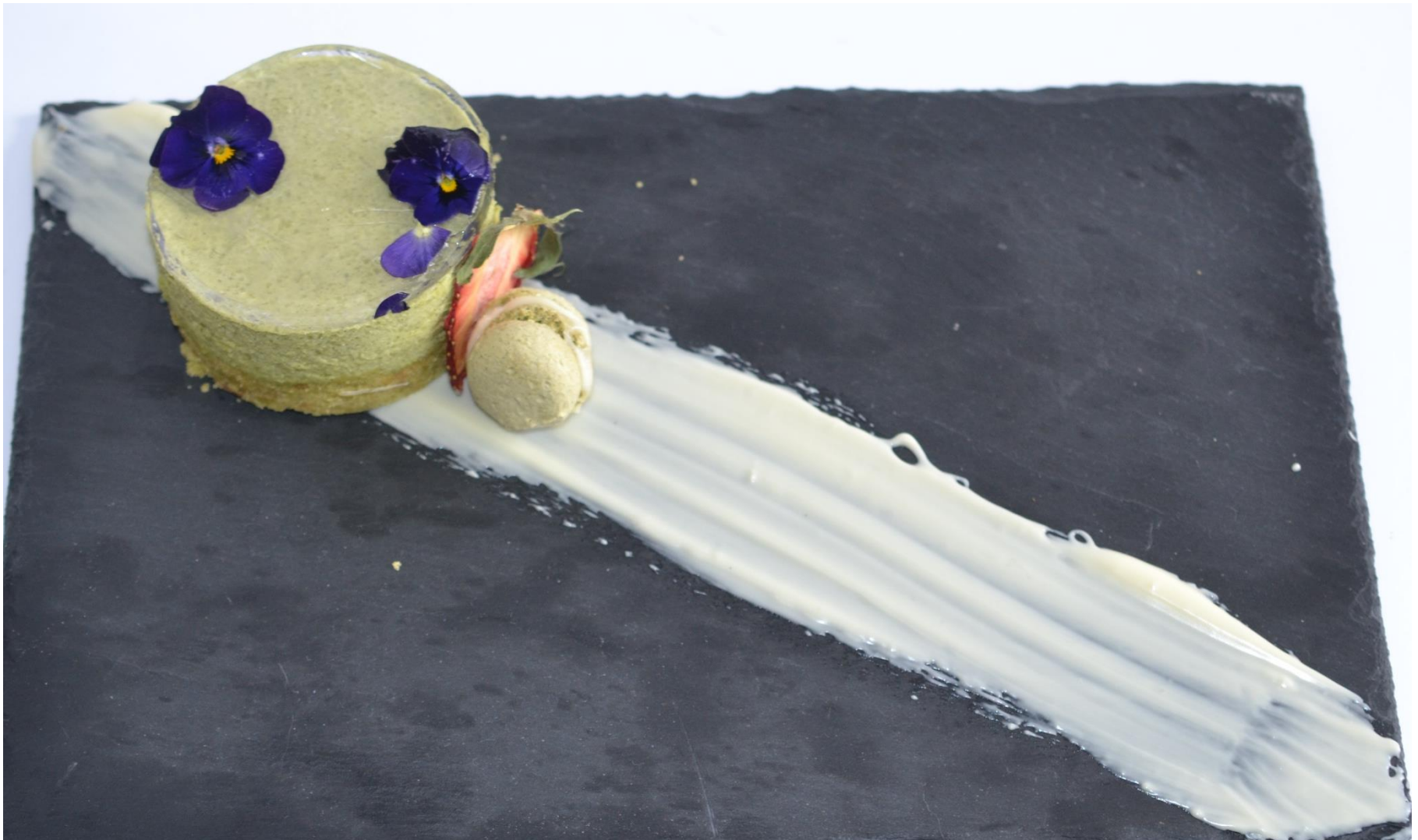
















































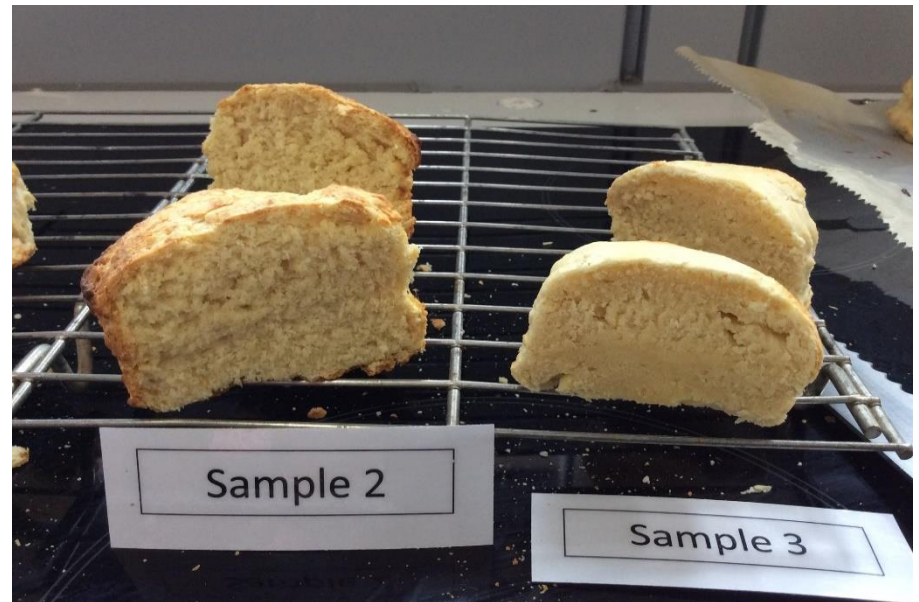


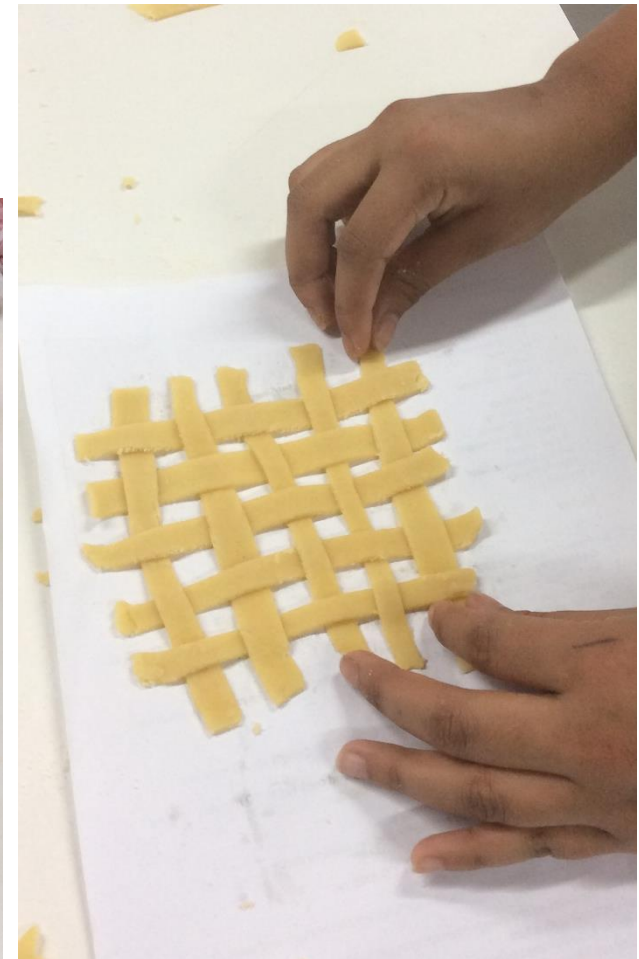
## MCA Grown Vegetables





## GCSE Food Science investigations









KS3/KS4 practical lessons