



# Mossbourne Community Academy

## Course Information

September 2022

## Contents Page

Page	Subject
2	English Language
3	English Literature
4	Maths
5	Biology
6	Chemistry
7	Physics
8	Combined Science
9	Animal Care
10	Health and Social Care
11	History
12	Geography
13	Psychology
14	Sociology
15	Religious Studies
16	Humanities Diploma
17	Travel and Tourism Level 1/Level 2
18	French
19	Spanish
20	Latin
21	Business
22	Computer Science
23	Life Science
24	Music
25	Drama
26	Physical Education
27	Fine Art
28	Food Preparation and Nutrition
29	Design and Technology
30	Graphic Design
31	Careers Support and Information

Red = Compulsory Subject for some or all students (not available to select as an option choice)

Blue = Optional Subject (available to select as an option choice)

# English Language

Learning Area: English HOLA: Ms S McKenzie Subject Coordinator: Ms S Harrold

This course will hone your reading and writing skills so that you develop the techniques you need to read, understand and analyse a wide range of different texts and write clearly and effectively. You will also improve your spoken language skills by presenting and responding verbally to questions throughout the course. This course will support your success in other subjects and in your future career.



## Progression Routes

English Language GCSE is required for entrance to many colleges and universities. It is also a desirable and often compulsory qualification for a range of different areas of employment.

Additionally, English Language GCSE complements GCSE English Literature superbly and a good grade in this subject can make the transition to English Literature A Level far more successful.

## Assessment Details

Exam Board	AQA
Name of Qualification	English Language
QAN Number	60142923
Structure/grading system	100 % exam (2 papers)/ Graded 9 to 1.

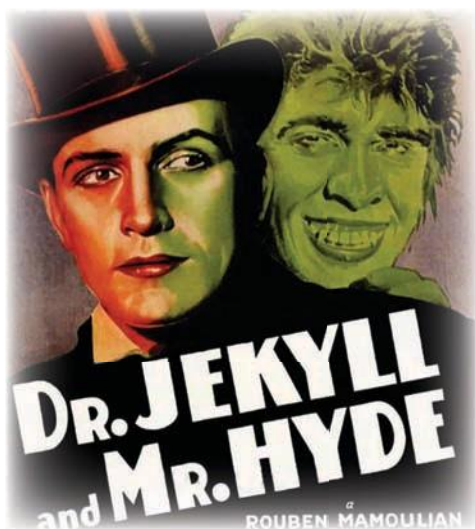
# English Literature

Learning Area: English HOLA: Ms S McKenzie Subject Coordinator: Ms S Harrold

The study of poems, plays and novels provides us all with a window into the attitudes and concerns of people from different countries and from different times. You will study a wide range of texts to challenge and inspire you. Texts that will be studied include Shakespeare's *Macbeth*, Robert Louis Stevenson's 19<sup>th</sup> century novel, *The Strange Case of Dr Jekyll and Mr Hyde*, as well as a modern prose or drama text and an anthology of poetry.



## Progression Routes



The skills acquired at English Literature GCSE level, particularly the study of Shakespeare and pre- and post-twentieth century prose, poetry and drama, are ideally suited to the study of English Literature A Level, or indeed any A Level in the humanities.

Any student that scores highly at English Literature and English Language GCSE would be well equipped for this particular academic routes.

## Assessment Details

Exam Board	AQA
Name of Qualification	English Literature
QAN Number	60144476
Structure/grading system	100 % exam (2 papers)/ Graded 9 to 1.

# Maths

Learning Area: Maths and Computing

HOLA: Mr I Deledicq Subject Coordinator: Mr A Lee



Mathematics provides a way of viewing and making sense of the world. It is used to analyse and communicate information and ideas and to tackle a range of practical tasks and real-life problems.

Mathematics is one of the core National Curriculum subjects, so every student studies the subject for GCSE. The GCSE (9-1) curriculum has divided the subject into five content domains: number; algebra; ratio; proportion and rates of change; geometry and measures; probability and statistics.

## Progression Routes

Students who study Maths at GCSE and achieve an acceptable grade will have the opportunity to continue their study to AS and A2 Level.

Many courses and professions insist that applicants have a grade 4 or higher in mathematics. The skills of logical reasoning, numeracy and communicating information are essential in almost all careers.

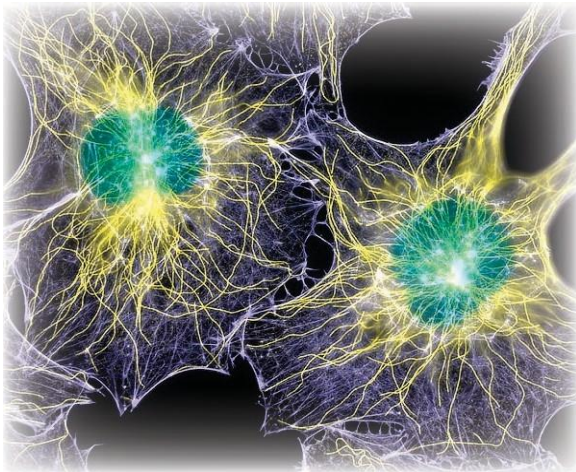


## Assessment Details

Exam Board	Pearson
Name of Qualification	Maths
QAN Number	60147003
Structure/grading system	100 % exam (3 papers, equally weighted) One non- calculator, two calculator exams. / Students may take the Higher Tier (grades 9 – 4) or Foundation Tier (grades 5 – 1).

# Biology

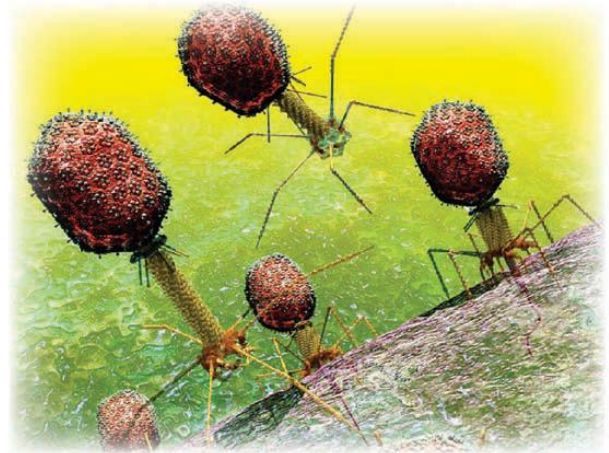
Learning Area: Science HOLA: Mr O Hawkins Subject Coordinator: Dr Castle-Miller



Biology helps us to understand and appreciate the beauty and wonder of all living things. By studying the AQA GCSE, students obtain one grade in Biology (9-1) and develop an understanding of an exciting range of topics from cells to populations. The course is rigorous, challenging and exciting as Biology is a subject in which new discoveries are made daily. The study of Biology develops skills in literacy, numeracy, analysis and critical thinking, which are all essential for any university course or profession.

## Progression Routes

The course provides a strong basis for progression onto A Level Biology. The course is highly recommended to students wishing to pursue a career in Medicine, Biological Sciences, Teaching, Veterinary Medicine and Nursing as well as Law, Business, Finance and a whole host of other vocations.



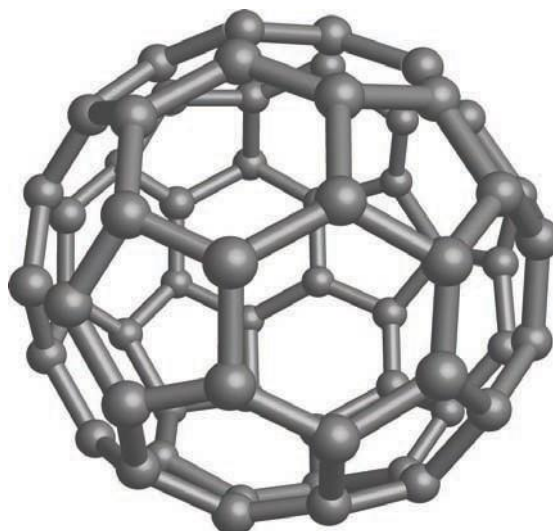
## Assessment Details

Exam Board	AQA
Name of Qualification	Biology
QAN Number	60187529
Structure/grading system	100 % exam (2 papers)/ Graded 9 to 1.

# Chemistry

Learning Area: Science HOLA: Mr O Hawkins Subject Coordinator: Mr Kennedy

Diamond and coal are both made from carbon, yet their worth, reactivity and structure are totally different. Chemistry is a fascinating and challenging subject that attempts to explain the world using our understanding of atomic structure and how atoms interact with each other. The academic challenges within the course make Chemistry a highly respected qualification by schools, employers and universities. The AQA GCSE allows students to obtain one grade in Chemistry (9 – 1). If you like practical work, have a good grasp of Maths, enjoy thinking about abstract ideas and want to understand the world, then you will love this course.



---

## Progression Routes

The AQA GCSE in Chemistry will directly support progression onto Chemistry and Biology A Level. This course would be ideal for students wanting to enter careers in Science, Teaching, Medicine, Dentistry, Pharmacy and Veterinary Science. It is an extremely valuable course when applying to many other professions as it demonstrates academic rigour, problem solving skills and abstract thought.

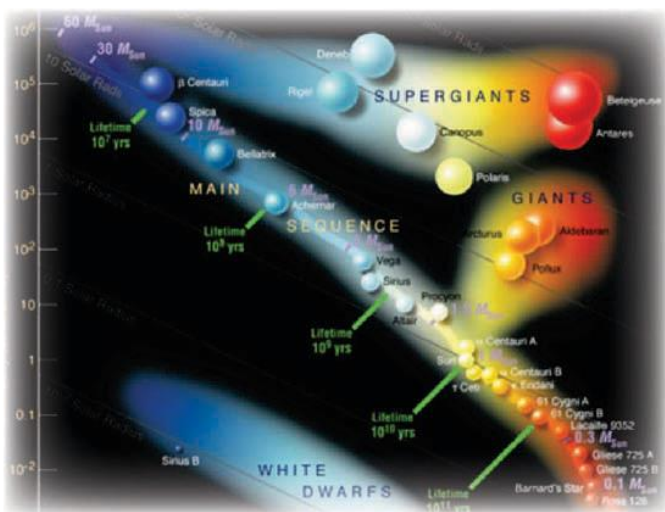
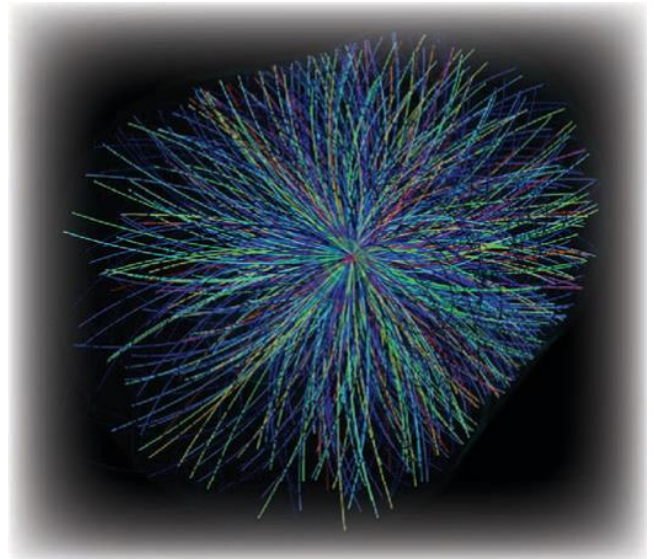
## Assessment Details

<b>Exam Board</b>	AQA
<b>Name of Qualification</b>	Chemistry
<b>QAN Number</b>	60187578
<b>Structure/grading system</b>	100 % exam (2 papers)/ Graded 9 to 1.

# Physics

Learning Area: Science HOLA: Mr O Hawkins Subject Coordinator: Ms K Clough

Physics is the most fundamental of all the sciences. Students studying Physics learn how to appreciate and understand the complexity of the universe from the subatomic to the supernova. The AQA GCSE allows students to obtain one grade in Physics (9 – 1) and is designed to allow students to learn about the unifying patterns and themes of Physics. If you like practical work, have an excellent grasp of Maths and enjoy thinking about the properties of matter and energy then this course is for you.



## Progression Routes

The course provides a basis for progression onto A Level Physics.

The course is highly recommended to students wishing to pursue a career in Physics, Engineering, Medicine, Architecture, other Sciences, as well as Law, Business and Finance and of course Teaching.

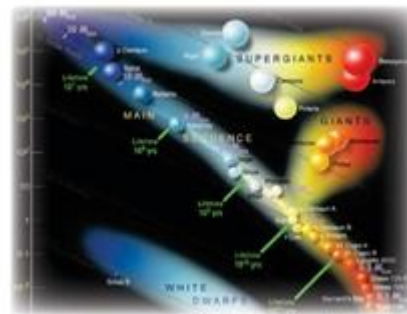
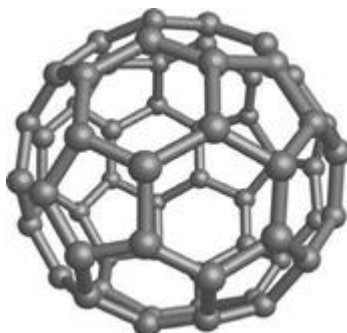
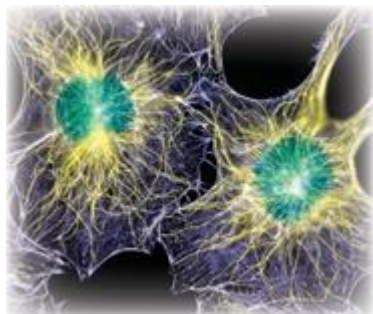
## Assessment Details

Exam Board	AQA
Name of Qualification	Physics
QAN Number	60187517
Structure/grading system	100 % exam (2 papers)/ Graded 9 to 1.



# Combined Science

Learning Area: Science HOLA: Mr O Hawkins  
Subject Coordinators: Dr Castle-Miller, Mr Kennedy and Ms Clough



Combined Science comprises Biology, Chemistry and Physics. The academic challenges within the course make Combined Science a highly respected qualification by schools, employers and universities. The AQA Combined GCSE allows students to obtain two GCSE grades in Science, as an average from their Biology, Chemistry and Physics exams.

If you like practical work, have a good grasp of Maths, enjoy thinking about abstract ideas and want to understand the world, then you will love this course.

## Progression Routes

The AQA GCSE in Combined Science will directly support progression onto Biology, Chemistry or Physics A Level.

This course would be ideal for students wanting to enter careers in Science or those listed in the Biology, Chemistry or Physics GCSE.

It is an extremely valuable course when applying to many other professions as it demonstrates academic rigor, problem solving skills and abstract thought.

## Assessment Details

<b>Exam Board</b>	AQA
<b>Name of Qualification</b>	Combined Science
<b>QAN Number</b>	6018758
<b>Structure/grading system</b>	100 % exam (2 Biology, 2 Chemistry and 2 Physics papers) 2 GCSEs Higher Tier (grades 9-9 to 4-3) of Foundation Tier (grades 5-5 to 1-1)

# Animal Care

**Learning Area: Science HOLA: Mr O Hawkins Subject Coordinator: Ms K Barber**

The Level 1/Level 2 First Award in Animal Care is designed to give an introductory overview to some of the key principles, knowledge, understanding and skills relevant to the animal care sector.

Learners will study animal health, which is externally assessed via a written paper-based exam, as this knowledge and understanding is essential when caring for animals. Learners will also develop their safe animal handling skills, which is vital in order to care effectively for animals.



## Progression Routes

The BTEC First suite in Animal Care provides the knowledge, skills and understanding for Level 2 learners to progress to other Level 2 vocational qualifications for the land-based sector. Learners may also progress to Level 3 vocational qualifications, such as BTEC nationals, specifically the Pearson BTEC Level 3 National in Animal Management and related academic qualifications.

## Assessment Details

<b>Exam Board</b>	Pearson
<b>Name of Qualification</b>	BTEC Level 1/Level 2 First Award in Animal Care
<b>QAN Number</b>	60145304
<b>Structure/grading system</b>	75% controlled assessment coursework and 25% exam. Graded at Level 1 Pass, Level 2 Pass, Level 2 Merit, Level 2, Animal Housing and Distinction or Level 2 Distinction*.

# Health and Social Care

Learning Area: Science HOLA: Mr O Hawkins Subject Coordinator: Ms K Barber

Health, social care and early years practitioners need to understand the different ways people grow and develop during their lives, as well as having a passion for working with people in health care environments.

This course allows you to develop a range of skills and knowledge based around these professions, such as excellent communication skills, knowledge of human growth and development and an understanding of the services provided in health and social care settings.



If you are interested in entering the caring professions in the future, this course will enable you to develop a range of personal and professional skills and techniques that will help you to achieve that goal.

## Progressions Routes



The skills acquired studying BTEC enable progression on vocational qualifications at Level 3, such as BTEC Level 3 nationals in Health and Social Care or A-Level Health and Social Care.

These routes then allow progression onto many Health and Social Care based professions such as Nursing, Midwifery, Social Work, Health Care, Nursery Nursing, Dental Nursing and Paramedic work.

## Assessment Details

<b>Exam Board</b>	Pearson
<b>Name of Qualification</b>	BTEC Level 1/Level 2 Tech Award in Health and Social Care
<b>QAN Number</b>	60303955
<b>Structure/grading system</b>	60 % controlled assessment coursework and 40% exam. Graded at Level 1 Pass, Level 2 Pass, Level 2 Merit, Level 2, Animal Housing and Distinction or Level 2 Distinction*.

# History

Learning Area: Humanities HOLA: Miss O Lester

Subject Coordinator: Miss J Edgar

The main aim of History GCSE is to get students to think about how the world around them has come to be. The days when History was just about dates and terms has long passed. History now encourages students to develop a wide range of transferable skills. History is an extremely well-respected subject, forming young minds into analytical, critical thinkers with excellent powers of reasoning.

Students study a thematic Study of Crime and Punishment over 1000 years (20%), and also an Historical Environment Study into crime and policing in Whitechapel (10%). Students will also study a period examining Superpower relations and the Cold War (20%) and a British Depth Study of Elizabethan England (20%). They will also study a Modern Depth Study focusing upon Weimar and Nazi Germany (30%). All papers will be sat in the summer of Year 11.



## Progression Routes

The study of History acts as an excellent basis for any student wanting to pursue careers in areas such as Journalism, Law, Education, Research, Archaeology, Politics, Business, Economics and many more. History GCSE will also give students an excellent gateway into the study of Higher Education topics such as Philosophy, Archaeology, History of Ideas and Classical Civilisation.

## Assessment Details

Exam Board	Pearson
Name of Qualification	History
QAN Number	60180924
Structure/grading system	100 % exam (3 papers), paper 1: 30%, paper 2: 40% and paper 3: 30%/ Graded 9 to 1.

# Geography

Learning Area: Humanities HOLA: Miss O Lester

Subject Coordinator: Mr T Chalk

Geography helps you to make sense of the world around you. It is up-to-date, relevant, interesting and challenging. It covers a range of current issues such as climate change, global development, natural hazards, urbanization and conflict. The GCSE will give you a broad range of useful transferable skills as well as letting you get to grips with some of the big issues that are affecting our world today and will do in the future. There are compulsory fieldtrips as part of the course and students should expect to spend some of their learning time outdoors



## Progression Routes

Geography will help you develop the following skills:

- Global Literacy: virtual travel in almost every lesson!
- Spatial Awareness: map making, map reading and GIS.
- Analytical Skills: hypothesis testing and data analysis.
- Numeracy and Literacy: preparing reports and analysing figures.
- Complex Problem Solving: investigating answers and decision making.
- Environmental Awareness: understanding our impact on the world and active citizenship.

This wide skill base can prepare for virtually any A Level, particularly Humanities and Science subjects. It is valued by the UK's top universities as a facilitating subject, which means it is valuable for a wide range of degree courses. Geography itself a broad-based academic degree which is well respected by employers. Geography graduates have one of the highest rates of graduate employment; pupils who have studied Geography have gone on to work in law, economics, environmental consultancy, teaching, town planning and many more.

## Assessment Details

Exam Board	AQA
Name of Qualification	Geography
QAN Number	60184103
Structure/grading system	100 % exam (3 papers), paper 1: 35%, paper 2: 35% and paper 3: 30%/ Graded 9 to 1.

# Psychology

Learning Area: Humanities HOLA: Miss O Lester

Subject Coordinator: Mr S. Wakefield

Psychology is the scientific study of the human mind, brain and behaviour. As this discipline is centered on people, students will be able to apply what they learn in class to the everyday world – and do so for the rest of their lives. The content of the course is split into eight sections:



## Unit 1: Cognition and Behaviour

- 1) Memory (*how memory works, theories of memory and factors affecting memory*)
- 2) Perception (*explanations of visual illusions, theories of perception and factors that affect perception*)
- 3) Development (*early brain development, cognitive/thought development and the effects of learning on development*)
- 4) Research Methods (*methods of investigation, methods of control and ethical considerations*)

## Unit 2: Social Context and Behaviour

- 1) Social Influence (*obedience, conformity, prosocial behaviour and the influence of a crowd*)
- 2) Language, Thought and Communication (*human vs animal communication and explanations of non-verbal communication*)
- 3) Brain and Neuropsychology (*the structure and function of the brain and nervous system*)
- 4) Psychological Problems (*explanation of and treatments for addiction and depression*)

## Progression Routes

Psychology is traditionally a very academic and versatile subject. It is useful for anyone who will be dealing with people, particularly those wishing to follow a career in Medicine, Social Work, Sports Psychology, Law and Business. It has clear overlaps with Biology and Sociology. It offers a sound base for progression to A Level Psychology, one of the most popular A Levels taken, which can then be followed by numerous options, one of which would be a Psychology degree.

## Assessment Details

Exam Board	AQA
Name of Qualification	Psychology
QAN Number	60309325
Structure/grading system	100 % exam (2 papers)/ Graded 9 to 1.

# Sociology

Learning Area: Humanities HOLA: Miss O Lester

Subject Coordinator: Mr S Wakefield

Sociology looks at how society works and how the various parts of society relate to each other. Core features of the course include the different views sociologists have about a subject like family or education. Studying Sociology will offer you insights into social and cultural issues like gender equality. It helps you develop a multi-dimensional perspective of, and critical approach to, issues surrounding culture, identity, religion, crime, childhood and social power. The content of the course is split into six sections:



## Unit 1: The Sociology of Families and Education

- 1) The Sociology of Families (*various family structures, how family relationships have changed and views on marriage and divorce*)
- 2) The Sociology of Education (*the role of education, the impact of social policy on education, the impact of school processes and external factors that affect achievement*)
- 3) Sociological Approaches and Research Methods (*methods of investigation and ethical considerations for research into families and education*)

## Unit 2: The Sociology of Crime and Deviance and Social Stratification

- 1) Crime and Deviance (*explanations of crime, media and public debates about crime, and views on crime and punishment*)
- 2) Social Stratification (*different views of social class, factors affecting life chances, wealth, income and poverty, power and authority, power and the state*)
- 3) Sociological Approaches and Research Methods (*methods of investigation and ethical considerations for research into crime and social stratification*)

## Progression Routes

GCSE Sociology will provide a firm platform on which to approach A Level Sociology. Sociology is a well-respected qualification that links well with other subject disciplines. Sociology is a useful qualification in a number of careers: Law, Police work, Media, Journalism, Nursing, Social work, Probation services, Research and the Civil Service. It also provides valuable knowledge and transferable skills that would be useful in the world of Business and Commerce.



## Assessment Details

Exam Board	AQA
Name of Qualification	Sociology
QAN Number	60307985
Structure/grading system	100 % exam (2 papers)/ Graded 9 to 1.

# Religious Studies

Learning Area: Humanities HOLA: Miss O Lester  
Subject Coordinator: Miss Vock-Betton

This course requires pupils to have an inquiring mind and be a critical thinker whilst maintaining a reflective approach to the study of religion. In addition to these skills the course supports the development of pupils' spiritual, moral, social and cultural development within school. It gives them a space to reflect on and develop their own values, opinions and attitudes in light of their learning. It gives them an opportunity to build on their understanding of different cultures locally, nationally and in the wider world, and contribute to community cohesion.



The course gives students the opportunities to discuss and debate contemporary moral issues such as abortion, euthanasia and life after death. Students will study crime and punishment, including justice, forgiveness and the treatment of criminals, including the application of ethical theories such as situation ethics to these issues. They will have the opportunity to develop their philosophical thinking around some of the most puzzling questions such as whether God exists and whether people's accounts of miracles, visions and other forms of religious experience are sufficient proof for the existence of God. They will also learn about atheist and Humanist arguments for or against the existence of God. Pupils will have to demonstrate knowledge and understanding in order to analyse questions related to these religious beliefs, values and their commitments.

## Progression Routes

The skills acquired at RS GCSE level are an excellent foundation for Philosophy and Ethics, Government and Politics, Sociology or Psychology at A Level. Any student who achieves a B or higher at GCSE would be well equipped for this particular academic route.

Many employers (especially the police, armed forces, caring professions, journalism, law and business) regard GCSE Religious Studies as a good qualification. It shows you are aware of other people's beliefs and the nature of the society you live in.



## Assessment Details

Exam Board	Pearson (Edexcel)
Name of Qualification	Religious Studies (Full Course)
QAN Number	60300632
Structure/grading system	100% exam (2 papers)/ (Graded 9 to 1). Paper 1: Islam, Religion and Ethics; Paper 2: Christianity, Religion, Peace and Conflict.



# Humanities Diploma

Learning Area: Humanities HOLA: Miss O Lester  
Subject Coordinator: Miss O Lester

Entry Level Humanities allows you to explore History, Geography and Religious Studies topics in one subject. Example topics include: 'The History of my Local Area' and 'People and Protest' (History); 'Fragile Environments' and 'The Journey of my Food' (Geography); 'Religious Festivals' and 'Places of Worship' (Religious Studies.) Much of the course is ICT-based so you will develop your research and ICT skills leading to proficiency using many Microsoft programs. You will also develop your ability to communicate different types of information in a variety of ways such as presentations, PowerPoint, posters, letters and leaflets.



## Progression Routes

Studying Humanities gives students a sense of place and knowledge of the world which is vital for those moving on into the world of work. The general ICT and communication skills developed will prove useful in a wide variety of jobs as students will develop strong ICT and clear communication skills.



## Assessment Details

Exam Board	WJEC
Name of Qualification	Humanities Entry Pathways
QAN Number	-
Structure/grading system	100% coursework

# TRAVEL AND TOURISM

Learning Area: Humanities HOLA: Ms O Lester  
Subject Coordinator: Mr T Chalk

The Pearson BTEC Tech Award in Travel and Tourism Level 1/Level 2 is for learners who want to acquire knowledge and technical skills through vocational contexts by exploring the aims of different travel and tourism organisations, the features of tourist destinations, how organisations meet customer requirements, and the influences on global travel and tourism as part of their Key Stage 4 learning. The qualification recognises the value of learning skills, knowledge and vocational attributes to complement GCSEs. The qualification will broaden learners' experience and understanding of the varied progression options available to them.



## What does the qualification cover?

The Award gives learners the opportunity to develop sector-specific knowledge and skills in a practical learning environment. Learners will develop knowledge that underpins the effective use of skills, processes and attitudes in the sector, such as the appeal of different tourist destinations to different types of customer, and the factors that influence travel and tourism. Students will develop skills such as researching different travel and tourism organisations, the features of tourist destinations, and the products and services available to meet the needs of different customers attitudes that are considered to be very important in the travel and tourism sector, including how to develop tourism while respecting the environment and local communities.



## Progression Routes

The skills acquired in the study of Travel and Tourism BTEC Tech Award will provide students with many routes after year 11. Some examples of progression routes are taking on a BTEC National in Travel and Tourism, which prepares learners to enter employment or apprenticeships, or to move on to higher education in the tourism sector.

## Assessment Details

<b>Exam Board</b>	Pearson
<b>Name of Qualification</b>	BTEC Tech Award in Travel and Tourism Level 1/Level 2
<b>QAN Number</b>	60330387
<b>Structure/grading system</b>	60% controlled coursework and 40% exam. Graded at Level 1 Pass, Level 2 Pass, Level 2 Merit, Level 2 and Distinction or Level 2 Distinction*

# French

**Learning Area: Modern Foreign Languages HOLA: Mr A Lamb**  
**Subject Coordinator: Ms M Caballero**

French is spoken by approximately 220 million people spanning the five continents and 30% of the English language today boasts French origins. This popular language is offered at GCSE as a full option language to students who have studied the language at KS3 or have French as their native language. Students who have studied French at KS3 will be expected to continue with a language at GCSE. Students study the full course which includes four papers: Listening, Speaking, Reading and Writing. The reading and writing papers feature a section on translation both to and from French. Students follow the AQA French course and this explores a range of topics at GCSE level such as Media, Sport and Leisure, Free Time, Business, Work and Employment and Travel and Tourism. French lessons feature independent and collaborative activities, delivering the course content whilst seizing opportunities to raise student cultural awareness and converse solely in the target language.



## Progression Routes

A grade 7 or above at GCSE provides a foundation for further study at A Level and at university. A Level teaching in this subject has a 66% A\* - A pass rate, with some students going on to study French or French and Business at degree level. The key skills learnt at GCSE enable students to be world citizens and to have awareness of current affairs, social and environmental issues.

A language GCSE is an invaluable and highly marketable skill for those students who are seeking work in fields such as Banking, Marketing and Media, and provides many opportunities for those who want to work abroad, particularly in Europe and Africa. Advanced level study in French will equip students with linguistic proficiency and an astute awareness of culture through the study of film, literature alongside a range of sub-topics.

## Assessment Details

<b>Exam Board</b>	AQA
<b>Name of Qualification</b>	French
<b>QAN Number</b>	60181576
<b>Structure/grading system</b>	100 % exam (4 papers, equally weighted) 25% speaking, 25% listening, 25% reading, 25% writing. / Students may take the Higher Tier (grades 9 – 4) or Foundation Tier (grades 5 – 1). The exams taken are either all Higher or all Foundation.

# Spanish

**Learning Area: Modern Foreign Languages HOLA: Mr A Lamb**  
**Subject Coordinator: Ms M Caballero**

Spanish is the second most spoken language in the world after Mandarin and before English. This popular language is offered at GCSE as a full option language to students who have studied the language at KS3 or have Spanish as their native language. Students who have studied Spanish at KS3 will be expected to continue with a language at GCSE. Students study the full course which includes four papers: Listening, Speaking, Reading and Writing. The reading and writing papers feature a section on translation both to and from Spanish. Students follow the AQA Spanish course and this explores a range of topics at GCSE level such as Media, Sport and Leisure, Free Time, Business, Work and Employment and Travel and Tourism. Spanish lessons feature independent and collaborative activities, deliver the course content whilst seizing opportunities to raise student cultural awareness through the provision of homework tasks across the four skills.



## Progression Routes



A grade 7 or above at GCSE provides a foundation for further study at A Level and at university. A GCSE in Spanish provides a foundation for further study at A Level. A language GCSE is an invaluable and highly marketable qualification for those students who are seeking work in the field of Banking, Media, Linguistics, translation and Interpretation among others. Having a language provides excellent opportunities for those who want to work abroad in Europe, the U.S and South America. The study of Spanish beyond GCSE will offer an in-depth understanding of Hispanic language and culture through the study of film, literature and a range of topics that build upon the GCSE syllabus. Such astute study of Spanish will provide students with the invaluable asset of social, linguistic and cultural versatility as they move towards university study before embarking upon a career.

## Assessment Details

<b>Exam Board</b>	AQA
<b>Name of Qualification</b>	Spanish
<b>QAN Number</b>	60181606
<b>Structure/grading system</b>	100 % exam (4 papers, equally weighted) 25% speaking, 25% listening, 25% reading, 25% writing. / Students may take the Higher Tier (grades 9 – 4) or Foundation Tier (grades 5 – 1). The exams taken are either all Higher or all Foundation.

# Latin

**Learning Area: Modern Foreign Languages HOLA: Mr A Lamb**  
**Subject Coordinator: Miss C Cheetham**

Students who have studied Latin at KS3 continue with Latin at KS4. All students will sit the full OCR GCSE in Latin in Year 10, comprised of a Language paper, Prose Literature paper and Verse Literature paper. Students must have studied Latin at KS3 and will be advised by their teacher regarding continuing with Latin at KS4.



Students follow the Cambridge Latin Course until the end of Year 9, supplemented by work sheets, notes on grammar and syntax, and a defined vocabulary list. In Year 10, students also study original Roman authors, both prose and verse, using the Cambridge Latin Anthology or the new OCR Latin Anthology.

## Progression Routes



Students of Latin at GCSE who have achieved Grade 6 or above have the opportunity to continue their study of Latin to A Level. Should they wish to broaden their knowledge of the Classical World or to specialize in Classical Subjects, they will also be able to pick up Classical Civilisation without having taken the GCSE in Classical Civilisation and possibly even to study Classical Greek at AS Level.

All major universities offer degrees in Classics or degrees which combine Latin with another language or Humanities subject. Classics continues to be an extremely well-respected subject and those with Classics degrees have among the highest employment rates after Higher Education. Latinists and Classicists have a tradition of being particularly successful in the fields of Law, Media, Politics and Finance.

## Assessment Details

<b>Exam Board</b>	OCR
<b>Name of Qualification</b>	Latin
<b>QAN Number</b>	60181242
<b>Structure/grading system</b>	100 % exam (3 papers): Paper 1 – Language (50%,) Paper 2 – Prose (25%,) Paper 3 – Verse (25%.)

# Business and Enterprise

Learning Area: Business, Economics and Enterprise HOLA: Ms L Thompson  
 Subject Coordinator: Ms L Thompson

Everything around us involves Business. In studying this subject, you will get the opportunity to understand different business types, ranging from small enterprises to large multinationals, including businesses operating in local, national and global contexts.

Students will develop an understanding of how these contexts impact on business behaviour.

Both GCSE Business and the BTEC Level 1/ Level 2 Tech Award in Enterprise are broad based qualifications providing an in-depth study of the world of business. You will learn about the full range of business topics including business planning, marketing, finance and production alongside operations management.



## Progression Routes

These well recognised qualifications focus on knowledge, analysis, evaluation and practicality that will put you in a good position to study any combination of A Levels; aligned subjects include A Level Business, Maths or Economics. This could also lead to studying a level 3 qualification at college or within the business environment as an apprentice.



## Assessment Details

<b>Exam Board</b>	Pearson	AQA
<b>Name of Qualification</b>	BTEC Level 1/ Level 2 Tech Award in Enterprise	GCSE Business
<b>QAN Number</b>	60319161	60303049
<b>Structure/Assessment</b>	60% controlled coursework and 40% exam. Graded at Level 1 Pass, Level 2 Pass, Level 2 Merit, Level 2 and Distinction or Level 2 Distinction*.	100 % exam (2 papers), Graded 9 to 1.

# Computer Science

Learning Area: Maths and Computing HOLA: Mr Deledicq  
Subject Coordinator: Miss Powell

Both GCSE and BTEC Level 1/ Level 2 Tech Award in Digital Information Technology give you an excellent opportunity to investigate computers and how they're used, and to develop computer programming and problem-solving skills. You'll also do some fascinating in-depth problem solving. Students will study a number of units which include the following content:



- Fundamental principles and concepts of Computer Science, including abstraction, decomposition, logic, algorithms, and data representation.
- Analysis of problems in computational terms through practical experience of solving such problems, including designing, writing and debugging programs.
- Creative, innovative, analytical, logical and critical thinking.
- Collecting, presenting and interpreting data.
- Effective digital working practice.

## Progression Routes



The importance of Computer technology is growing as it tries to meet the increasing requirements of modern society. As a result, there is a bigger demand for professionals who are qualified in related disciplines. Those who want to go on to higher study and employment in the field of Computer Science will find that this course provides a superb knowledge foundation.

If you take Computer Science GCSE, this can count as one of the 3 sciences for the EBacc, or if you want to progress to study the subject at A Level or university, this course ensures that you will have a sound underpinning knowledge of this subject area. A range of related areas that you may want to study and work in, including Engineering, Finance, Management, Science and Medicine, would prepare you by taking this course. The BTEC Level 1/ Level 2 Tech Award in Digital Information Technology has a clear progression onto Level 3 study for students who want to explore digital information technology further.

## Assessment

<b>Exam Board</b>	Pearson	OCR
<b>Name of Qualification</b>	BTEC Level 1/ Level 2 Tech Award in Digital Information Technology	Computer Science
<b>QAN Number</b>	603/2740/6	6018355X
<b>Structure/Assessment</b>	60% controlled coursework and 40% exam. Graded at Level 1 Pass, Level 2 Pass, Level 2 Merit, Level 2 and Distinction or Level 2 Distinction*.	100 % exam (2 papers), Graded 9 to 1.

# Life Science

**Including – Personal & Social Development  
ASDAN Life Skills Challenge  
Learning Area: CSD HOLA: Ms S Metcalf  
Subject Coordinator: Ms J Street**

This new, bespoke course combines two exceptional qualifications to support broad, holistic development in two core areas.

**The Personal and Social Development** programme is accredited by ASDAN and supports young people to become confident, independent adults. Units within this qualification may include:

- Preparation for Work – Managing Money – Healthy Living – Environmental Awareness - Making the most of Leisure Time – Using Technology in the Home and Community – Personal Safety in the Home and Community – Individual Rights and Responsibilities.



**ASDAN Life Skills Challenge** is a flexible way to recognise and reward small steps of achievement, with a focus on personalised learning and progression. Units within this qualification may include: preparing a simple snack, going shopping, understanding money, understanding own personal hygiene and staying safe on social media.

## Progression Routes



In both PSD and Life Skills challenge, progression is recognised throughout the three levels of the qualification. This requires the candidate to demonstrate their ability to maintain skills learnt as well as recognizing lateral and incremental achievements. Once completed students can progress to a Level 1 or 2 qualification. vocational courses at college.

## Assessment Details

<b>Exam Board</b>	ASDAN (PSD)	ASDAN
<b>Name of Qualification</b>	Personal & Social Development programme	Life Skills Challenge
<b>QAN Number</b>		
<b>Structure/Assessment</b>	100% coursework	100% coursework



# Music

**Learning Area: Performing Arts HOLA: Mr M Watson Subject Coordinator: Miss S Sayer**

Music is a challenging subject which allows students to capitalise on the different musical interests and skills they've developed throughout their lives.

Our KS4 courses, both GCSE Music and the BTEC Level 1/Level 2 Tech Award in Music Practice, are designed to enable the study of music through the integration of performing, composing, listening and appraising, with the opportunity to use music technology in performance and as a compositional tool.

Studying Music develops many skills including team-work, leadership, independence, analytical thinking and critical appraisal, which are crucial to any career path and sought after by employers.



## Progression Routes

Music at KS4 leads to KS5, which could in turn lead to a Music or Performing Arts degree. Today, music is a major industry with a wide range of opportunities. Creative industries contribute £8m an hour to the UK economy.



Your child may want to study music for the love of it, or to pursue a career as a singer, instrumentalist or composer. Whatever the level of skill your child has achieved, there are career paths open, whether they decide to leave school at 18 or go on to university. It's not (just) about being a pop star; there are jobs in music therapy, musical theatre, teaching, production, promotion and management as well as performance.

## Assessment Details

<b>Exam Board</b>	Pearson	AQA
<b>Name of Qualification</b>	BTEC Level 1/Level 2 Tech Award in Music Practice	GCSE Music
<b>QAN Number</b>	60329737	60183615
<b>Structure/Assessment</b>	60% controlled assessment coursework and 40% exam. Graded at Level 1 Pass, Level 2 Pass, Level 2 Merit, Level 2 and Distinction or Level 2 Distinction*.	40 % exam (1 paper), 60% controlled assessment coursework / Graded 9 to 1.

# Drama

**Learning Area: Performing Arts HOLA: Mr M Watson**

**Subject Coordinator: Miss T Kirkwood**

Drama harnesses creativity, confidence, team-working skills, independent working and thinking, 'presence', verbal skills and knowledge of the art of theatre. Students devise their own work from a variety of stimuli, perform a range of scripted material and explore a range of texts and live theatre throughout the course.



## Progression Routes



Drama GCSE and BTEC Level 1/ Level 2 Tech Award in Performing Arts (Acting) can both lead to A Level Drama and Theatre, university degree courses or a vocational degree at Drama School. Careers benefitting from the study of Drama include: acting, directing, stage management and theatre design, law, journalism, TV presenting, radio... and any job which involves an element of public speaking or presentation, such as Sales and Marketing. Drama experience is also beneficial in jobs where people-skills and empathy are important, such as Social Care or Counselling.

## Assessment Details

<b>Exam Board</b>	Pearson	WJEC EDUQAS
<b>Name of Qualification</b>	BTEC Level 1/Level 2 Tech Award in Performing Arts (Acting)	Drama
<b>QAN Number</b>	60304066	60184206
<b>Structure/Assessment</b>	60% controlled assessment coursework and 40% exam. Graded at Level 1 Pass, Level 2 Pass, Level 2 Merit, Level 2 and Distinction or Level 2 Distinction*.	40% exam, 40% Coursework, 20% performance exam  Graded 9 to 1.



# Physical Education and Sport

Learning Area: Physical Education HOLA: Ms Yennaris  
Subject Coordinator: Mr T Austin



**GCSE P.E.** includes theory and practical elements. The practical element will develop your knowledge and practical skills in a range of physical activities. For this, pupils will be assessed in three different activities: one team; one individual and 1 of your choice, and will also complete a Personal Exercise Programme.

The theoretical aspect includes topics related to health and fitness, data analysis, sport psychology and socio-cultural influences.

The course also:

- Reflects today's global world – students will engage with key issues and themes relating to contemporary global influences on physical education and sport.
- Develops a holistic understanding of physical education – stimulating content is at the heart of this engaging qualification.

Students will receive a well-rounded and full introduction to the world of PE, sport and sport science through the combination of physical performance and academic challenges. The course supports progression from Key Stage 3.

**VCERT** includes theory elements but no practical. The theoretical aspect includes topics related to health and fitness.

## Progression Routes



The course develops the transferable skills and key skills that employers are looking for and can lead to a wide variety of employment opportunities. This can include further training in areas such as Recreational Management, Leisure Activities, Coaching, Officiating, the Fitness industry, the Armed Forces and the Civil Service. Successful learners at Level 2 may also consider general qualifications at Level 3 such as GCE, AS or A Levels in Physical Education and Leisure Studies, and Level 3 Nationals in Sport and Exercise Sciences.

## Assessment Details

<b>Exam Board</b>	VCERT- NCFE	GCSE- OCR
<b>Name of Qualification</b>	NCFE Tech Award in Health & Fitness	Physical Education
<b>QAN Number</b>	60326505	60184425
<b>Structure/grading system</b>	60% controlled assessment coursework and 40% exam. Graded at Level 1 Pass, Level 2 Pass, Level 2 Merit, Level 2 and Distinction or Level 2 Distinction*.	60 % exam (2 papers), 40% controlled assessment coursework (30% practical, 10% coursework) / Graded 9 to 1.

# Fine Art

**Learning Area: Art and Design Technology HOLA: Ms. B. Pyzlak**  
**Subject Coordinator: Ms. E. Field**

The Edexcel Art and Design Fine Art GCSE is a very creative course that allows you to create personal visual responses to broad-based themes. You will explore these themes using a wide range of artistic processes: painting, drawing, photography, sculpture, animation, digital manipulation, printmaking and video, and will produce ambitious work on a larger scale than at Key Stage 3.

Key skills you will learn:

How to use new processes and materials and how to develop your work and express ideas. You will develop drawing skills and explore your imagination. The course will teach you how to analyse artists' and designers' work and use creative problem solving and communication skills. You will create original work that is personal to you and understand how to use cultural and artistic contexts to express your own ideas based on extensive research and guided or independent visits to galleries and events.



## Progression Routes



This course develops your ability to solve problems, generate original ideas, understand others and express yourself. Research shows these skills are highly desired by universities, colleges and employees. From GCSE Art you can move onto A Level or BTEC National courses.

The skills learnt in Art are an excellent creative foundation for moving into careers in the thriving Design and Creative industries such as Graphic Design, gallery-based professions such as Curating, Art Marketing, or Architecture, Fashion, Textiles, Interior Design or any position that requires originality, confidence, creative thinking or problem-solving skills.

## Assessment Details

<b>Exam Board</b>	Pearson
<b>Name of Qualification</b>	Art & Design: Fine Art
<b>QAN Number</b>	60180699
<b>Structure/grading system</b>	60% Coursework, 40% Externally Set Assignment

# Food Preparation and Nutrition

Learning Area: Art, Design and Technology HOLA: Ms. B Pyzlak  
Subject Coordinator: Ms. B Pyzlak

Food Preparation and Nutrition is a new GCSE course that will equip students with an array of food preparation techniques as well as knowledge of nutrition, food science, food provenance and safety.



As well as being able to make informed decisions about healthy diet, students will gain an understanding of scientific principles of food preparation. They will gain this knowledge through a series of hands-on experiments and cooking sessions which involve planning, cooking and evaluating dishes at increasing levels of complexity.

## Progression Routes

This course develops a variety of practical, planning and evaluative skills. It equips students to progress onto a variety of A-level courses. It's a great foundation for moving into careers in the thriving catering/gastronomy industry.

Food preparation skills are integrated into five core topics:

Food, Nutrition and Health – Food Science – Food Safety – Food Choice – Food Provenance.



## Assessment Details

<b>Exam Board</b>	AQA
<b>Name of Qualification</b>	Food Preparation and Nutrition
<b>QAN Number</b>	60184218
<b>Structure/grading system</b>	50 % exam (1 paper), 50% Non-Examination Assessment (15% - NEA1: Food investigation report, 35% - NEA2: Food preparation assessment portfolio).

# Design and Technology

Learning Area: Art and Design Technology HOLA: Ms. B Pyzlak  
Subject Coordinator: Mr. J Pakington

*"[Design & Technology] recognises that art, maths, science, the practical and the theoretical, can all work together to bring about creative products".*  
Sir James Dyson

This qualification will allow you to develop your knowledge of materials alongside learning a wide range of practical skills, in order to apply them when completing a portfolio of work.

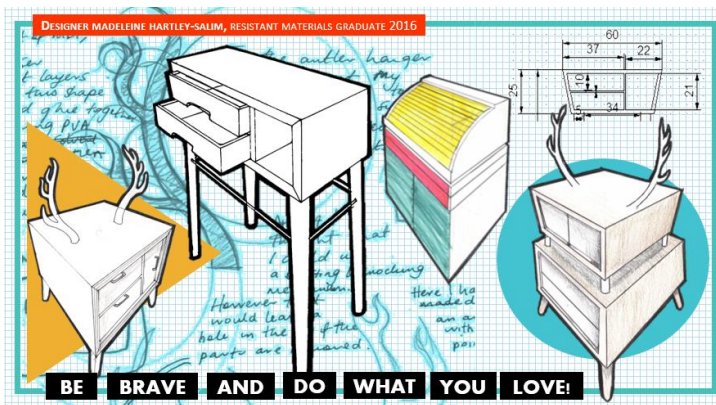
You will learn how to:

- Create, design and manufacture your own product;
- Think independently and analyse situations;
- Develop solutions to problems;
- Improve your practical skills using modern and traditional materials and techniques.



This qualification will allow you to demonstrate to universities and future employers that you can perform in a creative environment, work to deadlines and industry standards, communicate your ideas using a full range of IT and presentation packages, think laterally and use analytical skills.

## Progression Routes



After gaining a GCSE in Design & Technology (Product Design) you can move on to a range of courses, including A Level Product Design.

Product Design A Level students can go on to study the following subjects at degree level: Engineering, Architecture, Animation Graphic Design, Exhibition Design, Fashion Design, Furniture Design, Graphic Design, Industrial Design and Interior Design.

## Assessment Details

Exam Board	AQA
Name of Qualification	Design and Technology
QAN Number	60309842
Structure/grading system	50 % exam (1 paper), 50% controlled assessment portfolio) / Graded 9 to 1.

# Graphic Design

Learning Area: Art and Technology HOLA: Ms. B Pyzlak  
Subject Coordinator: Ms. E Field



Graphic design is a form of visual communication. It is the process by which visual information is given form and structure to communicate a message.

Being a graphic designer is the profession of visual communication that combines images, words and ideas to convey information to an audience. It

involves designing print or electronic forms of visual information for advertisement, publication or a website.

The Level 2 Technical Award in Graphic Design complements GCSE qualifications. It is aimed at 14-16 year olds who are interested in any aspect of graphic design, including sourcing ideas and design. It is equivalent to GCSE grades 8.5-4.

This qualification focuses on an applied study of the graphic design sector and learners will gain a broad understanding and knowledge of working in the sector. It is a suitable course for learners who are motivated and challenged by learning through hands-on experiences and through content which is concrete and related directly to those experiences.



## Progression Routes

Learners who achieve this V Cert qualification could progress onto Level 3 qualifications and A Levels, such as Level 3 Applied General Certificate in Art & Design, A Level Design and Technology. There are a number of specialist graphic design job roles, however there are also an enormous number of small graphic design companies where employees are often required to be able to demonstrate skills across the job roles and complete designs that can be used in a variety of media for a variety of purposes.

The skills learnt within Graphic Design are an excellent creative foundation if you are thinking of moving into careers such as Graphic Designer, Product/Brand Manager, Cartographer, Illustrator, Web Designer, Typographer, Graphic Crafts Maker, Brand Designer, Creative Director, Technical Illustrator, Packaging Designer, and Editor.



## Assessment Details

Exam Board	NCFE
Name of Qualification	NCFE Tech Award in Graphic Design
QAN Number	6030845X
Structure/grading system	50% controlled assessment coursework, 50% Externally set assignment.

# Careers

At Mossbourne, all staff contribute to Careers Education in their roles as tutors and subject teachers.

In addition to our own Careers Officer, Mr Edwards, we currently have a Careers Advisor, from Prospects Service, who is based at MCA once a fortnight. Every student will have the opportunity to attend an interview with these members of staff to discuss their future choices.



Students can also attend a 'drop-in' service which runs during Tuesday Period 5 lunchtimes, where they can meet with the Careers Officer without an appointment. This will be a good opportunity for students to explore how their options will support them with their future career pathways. Mr. Edwards can also be found on the Science mezzanine throughout the day. Students also have sessions during PSHCE Day dedicated to choosing their options and thinking about their future. This provides them with the opportunity to experience the world of work first-hand, as well as allow them to explore a job or career they may wish to pursue in the future.



## **Mr Edwards**

Careers Officer at Mossbourne Community Academy

Come and talk to me about your GCSE options and get some careers advice.

Thursday Period 5 – Science Mezzanine